

Product datasheet for **TA343940**

FIP1L1 Rabbit Polyclonal Antibody

Product data:

Product Type:	Primary Antibodies
Applications:	IHC, WB
Recommended Dilution:	WB
Reactivity:	Human
Host:	Rabbit
Isotype:	IgG
Clonality:	Polyclonal
Immunogen:	The immunogen for anti-FIP1L1 antibody: synthetic peptide directed towards the C terminal of human FIP1L1. Synthetic peptide located within the following region: EYAERGYERHRASREKEERHRERRHREKEETRHKSSRSNSRRRHESEEGD
Formulation:	Liquid. Purified antibody supplied in 1x PBS buffer with 0.09% (w/v) sodium azide and 2% sucrose.
Purification:	Affinity Purified
Conjugation:	Unconjugated
Storage:	Store at -20°C as received.
Stability:	Stable for 12 months from date of receipt.
Predicted Protein Size:	65 kDa
Gene Name:	factor interacting with PAPOLA and CPSF1
Database Link:	NP_112179 Entrez Gene 81608 Human Q6UN15
Background:	FIP1L1 is a component of the cleavage and polyadenylation specificity factor (CPSF) complex that plays a key role in pre-mRNA 3'-end formation, recognizing the AAUAAA signal sequence and interacting with poly(A) polymerase and other factors to bring about cleavage and poly(A) addition. FIP1L1 contributes to poly(A) site recognition and stimulates poly(A) addition. It binds to U-rich RNA sequence elements surrounding the poly(A) site. FIP1L1 may act to tether poly(A) polymerase to the CPSF complex.
Synonyms:	FIP1; hFip1; Rhe



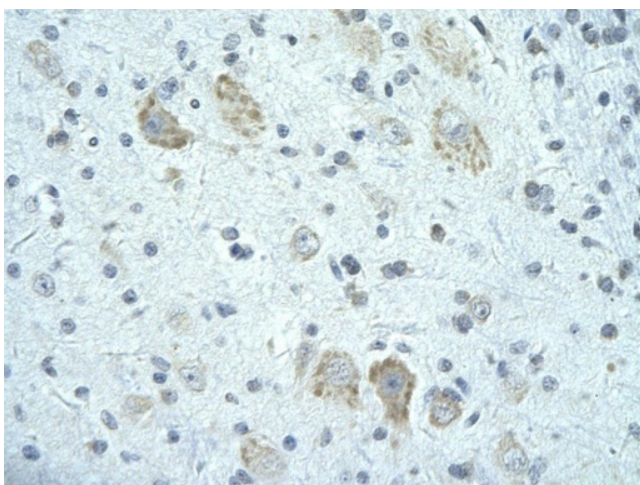
[View online »](#)

Note: Immunogen Sequence Homology: Dog: 100%; Pig: 100%; Rat: 100%; Horse: 100%; Human: 100%; Mouse: 100%; Bovine: 100%; Guinea pig: 100%; Rabbit: 93%; Zebrafish: 86%

Product images:



WB Suggested Anti-FIP1L1 Antibody Titration: 0.2-1 ug/ml; Positive Control: Jurkat cell lysate; FIP1L1 is supported by BioGPS gene expression data to be expressed in Jurkat



Rabbit Anti-FIP1L1 antibody; Paraffin Embedded Tissue: Human Brain cell; Cellular Data: Epithelial cells of renal tubule; Antibody Concentration: 4.0-8.0 ug/ml; Magnification: 400X