

Product datasheet for **TA343937**

PIGZ Rabbit Polyclonal Antibody

Product data:

Product Type:	Primary Antibodies
Applications:	WB
Recommended Dilution:	WB
Reactivity:	Human
Host:	Rabbit
Isotype:	IgG
Clonality:	Polyclonal
Immunogen:	The immunogen for anti-PIGZ antibody: synthetic peptide directed towards the N terminal of human PIGZ. Synthetic peptide located within the following region: VLWGGLSLLRVLWCLLPQTGYVHPDEFFQSPEVMAEDILGVQAARPWEFY
Formulation:	Liquid. Purified antibody supplied in 1x PBS buffer with 0.09% (w/v) sodium azide and 2% sucrose. <i>Note that this product is shipped as lyophilized powder to China customers.</i>
Purification:	Affinity Purified
Conjugation:	Unconjugated
Storage:	Store at -20°C as received.
Stability:	Stable for 12 months from date of receipt.
Predicted Protein Size:	63 kDa
Gene Name:	phosphatidylinositol glycan anchor biosynthesis class Z
Database Link:	NP_079439 Entrez Gene 80235 Human Q86VD9



[View online »](#)

Background:

The glycosylphosphatidylinositol (GPI) anchor is a glycolipid found on many blood cells that serves to anchor proteins to the cell surface. PIGZ is a protein that is localized to the endoplasmic reticulum, and is involved in GPI anchor biosynthesis. As shown for the yeast homolog, which is a member of a family of dolichol-phosphate-mannose (Dol-P-Man)-dependent mannosyltransferases, this protein can also add a side-branching fourth mannose to GPI precursors during the assembly of GPI anchors. The glycosylphosphatidylinositol (GPI) anchor is a glycolipid found on many blood cells that serves to anchor proteins to the cell surface. This gene encodes a protein that is localized to the endoplasmic reticulum, and is involved in GPI anchor biosynthesis. As shown for the yeast homolog, which is a member of a family of dolichol-phosphate-mannose (Dol-P-Man)-dependent mannosyltransferases, this protein can also add a side-branching fourth mannose to GPI precursors during the assembly of GPI anchors.

Synonyms:

GPI-MT-IV; PIG-Z; SMP3

Note:

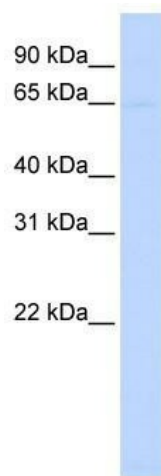
Immunogen Sequence Homology: Pig: 100%; Rat: 100%; Horse: 100%; Human: 100%; Bovine: 100%; Rabbit: 100%; Guinea pig: 100%; Mouse: 93%; Yeast: 80%

Protein Families:

Transmembrane

Protein Pathways:

Glycosylphosphatidylinositol(GPI)-anchor biosynthesis

Product images:

WB Suggested Anti-PIGZ Antibody Titration: 0.2-1 ug/ml; ELISA Titer: 1: 1562500; Positive Control: Hela cell lysate