

Product datasheet for **TA343936**

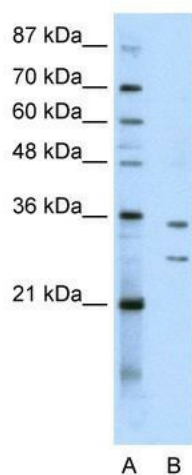
RPF1 Rabbit Polyclonal Antibody

Product data:

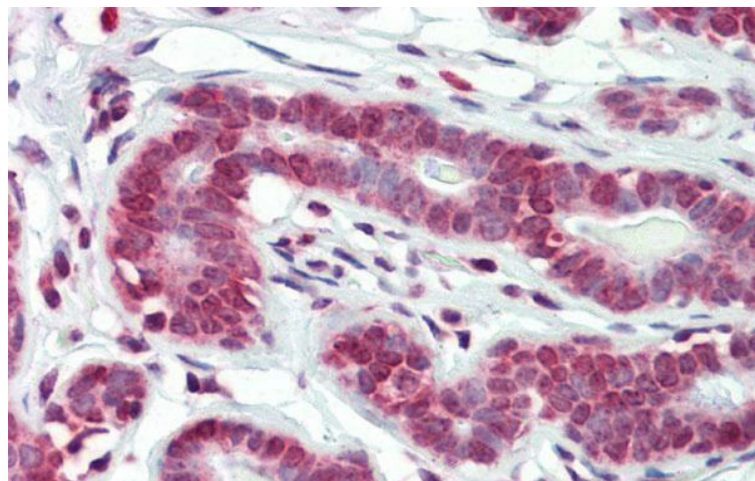
Product Type:	Primary Antibodies
Applications:	IHC, WB
Recommended Dilution:	WB, IHC
Reactivity:	Human
Host:	Rabbit
Isotype:	IgG
Clonality:	Polyclonal
Immunogen:	The immunogen for anti-BXDC5 antibody: synthetic peptide directed towards the N terminal of human BXDC5. Synthetic peptide located within the following region: AAAFPPGFSISEIKNKQRRHLMFTRWKQQQRKEKLAACKKLLKEREALGD
Formulation:	Liquid. Purified antibody supplied in 1x PBS buffer with 0.09% (w/v) sodium azide and 2% sucrose. <i>Note that this product is shipped as lyophilized powder to China customers.</i>
Purification:	Affinity Purified
Conjugation:	Unconjugated
Storage:	Store at -20°C as received.
Stability:	Stable for 12 months from date of receipt.
Predicted Protein Size:	38 kDa
Gene Name:	ribosome production factor 1 homolog
Database Link:	NP_079341 Entrez Gene 80135 Human Q9H9Y2
Background:	BXDC5 may be required for ribosome biogenesis.
Synonyms:	BXDC5
Note:	Immunogen Sequence Homology: Pig: 100%; Rat: 100%; Horse: 100%; Human: 100%; Mouse: 100%; Bovine: 100%; Rabbit: 100%; Guinea pig: 100%; Dog: 93%; Yeast: 79%



[View online »](#)

Product images:

WB Suggested Anti-BXDC5 Antibody Titration:
0.2-1 ug/ml; Positive Control: K562 cell lysate



Immunohistochemistry with Human Breast tissue
at an antibody concentration of 5.0 ug/ml using
anti-BXDC5 antibody