

## Product datasheet for **TA343935**

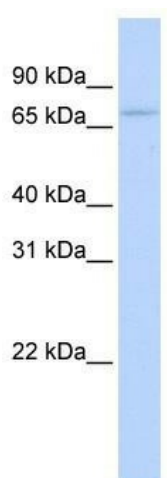
### ESRP2 Rabbit Polyclonal Antibody

#### Product data:

Product Type:	Primary Antibodies
Applications:	WB
Recommended Dilution:	WB
Reactivity:	Human
Host:	Rabbit
Isotype:	IgG
Clonality:	Polyclonal
Immunogen:	The immunogen for anti-RBM35B antibody: synthetic peptide directed towards the N terminal of human RBM35B. Synthetic peptide located within the following region: ATAGALGRDLGSDETDLILLVWQVVEPRSRQVGLHKSLVRAEAAALSTQ
Formulation:	Liquid. Purified antibody supplied in 1x PBS buffer with 0.09% (w/v) sodium azide and 2% sucrose. <i>Note that this product is shipped as lyophilized powder to China customers.</i>
Purification:	Affinity Purified
Conjugation:	Unconjugated
Storage:	Store at -20°C as received.
Stability:	Stable for 12 months from date of receipt.
Predicted Protein Size:	77 kDa
Gene Name:	epithelial splicing regulatory protein 2
Database Link:	<a href="#">NP_079215</a> <a href="#">Entrez Gene 80004 Human</a> <a href="#">Q9H6T0</a>
Background:	RBM35B contains 3 RRM (RNA recognition motif) domains. ESRP1 and ESRP2 (RBM35B) are epithelial cell-type-specific regulators of FGFR2 splicing.
Synonyms:	RBM35B
Note:	Immunogen Sequence Homology: Pig: 100%; Rat: 100%; Human: 100%; Mouse: 100%; Bovine: 100%; Rabbit: 100%; Guinea pig: 100%; Dog: 93%



[View online »](#)

**Product images:**

WB Suggested Anti-RBM35B Antibody Titration:  
0.2-1 ug/ml; ELISA Titer: 1: 312500; Positive  
Control: HeLa cell lysate; ESRP2 is supported by  
BioGPS gene expression data to be expressed in  
HeLa