

Product datasheet for **TA343934**

MRM1 Rabbit Polyclonal Antibody

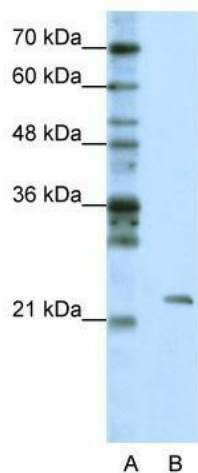
Product data:

| | |
|-------------------------|---------------------------------------------------------------------------------------------------------------------------------------------------------------------------------------------------------------------|
| Product Type: | Primary Antibodies |
| Applications: | IHC, WB |
| Recommended Dilution: | WB, IHC |
| Reactivity: | Human |
| Host: | Rabbit |
| Isotype: | IgG |
| Clonality: | Polyclonal |
| Immunogen: | The immunogen for anti-MRM1 antibody: synthetic peptide directed towards the C terminal of human MRM1. Synthetic peptide located within the following region: GTVGCPSTEDPQSSEIPIMSCLEFLWERPTLLVLGNEGSGLSQEVQASCQ |
| Formulation: | Liquid. Purified antibody supplied in 1x PBS buffer with 0.09% (w/v) sodium azide and 2% sucrose. <i>Note that this product is shipped as lyophilized powder to China customers.</i> |
| Purification: | Protein A purified |
| Conjugation: | Unconjugated |
| Storage: | Store at -20°C as received. |
| Stability: | Stable for 12 months from date of receipt. |
| Predicted Protein Size: | 18 kDa |
| Gene Name: | mitochondrial rRNA methyltransferase 1 |
| Database Link: | NP_079140 Entrez Gene 79922 Human Q6IN84 |
| Background: | MRM1 belongs to the RNA methyltransferase trmH family and probably methylates the ribose of guanosine G-2270 in the peptidyl transferase center of the mitochondrial large ribosomal RNA (21S) |
| Synonyms: | FLJ22578 |
| Note: | Immunogen Sequence Homology: Pig: 100%; Rat: 100%; Horse: 100%; Human: 100%; Rabbit: 100%; Guinea pig: 100%; Dog: 93%; Mouse: 91%; Bovine: 86% |

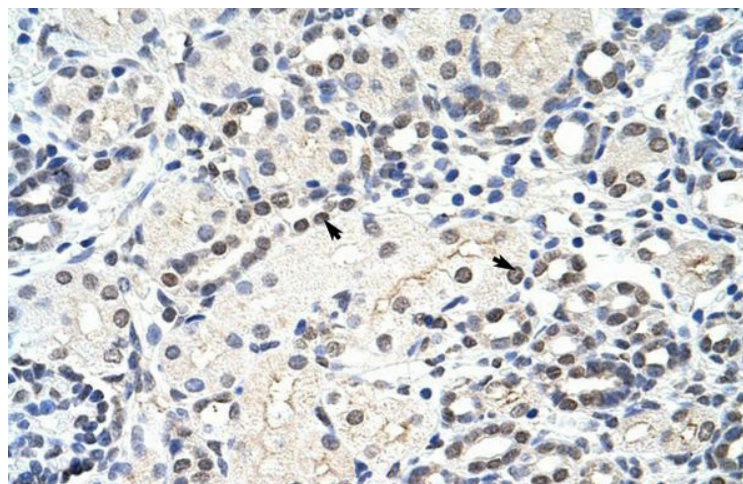


[View online »](#)

Product images:



WB Suggested Anti-MRM1 Antibody Titration: 1.25 ug/ml; Positive Control: HepG2 cell lysate



Rabbit Anti-MRM1 Antibody; Paraffin Embedded Tissue: Human Kidney; Cellular Data: Epithelial cells of renal tubule; Antibody Concentration: 4.0-8.0 ug/ml; Magnification: 400X