

Product datasheet for **TA343933**

MRM1 Rabbit Polyclonal Antibody

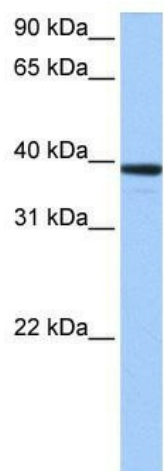
Product data:

Product Type:	Primary Antibodies
Applications:	WB
Recommended Dilution:	WB
Reactivity:	Human
Host:	Rabbit
Isotype:	IgG
Clonality:	Polyclonal
Immunogen:	The immunogen for anti-MRM1 antibody: synthetic peptide directed towards the C terminal of human MRM1. Synthetic peptide located within the following region: LVLGNEGSGLSQEVQASCQLLLLTILPRRQLPPGLES LNVSVAAGILLHSI
Formulation:	Liquid. Purified antibody supplied in 1x PBS buffer with 0.09% (w/v) sodium azide and 2% sucrose. <i>Note that this product is shipped as lyophilized powder to China customers.</i>
Purification:	Affinity Purified
Conjugation:	Unconjugated
Storage:	Store at -20°C as received.
Stability:	Stable for 12 months from date of receipt.
Predicted Protein Size:	39 kDa
Gene Name:	mitochondrial rRNA methyltransferase 1
Database Link:	NP_079140 Entrez Gene 79922 Human Q6IN84
Background:	MRM1 belongs to the RNA methyltransferase trmH family and probably methylates the ribose of guanosine G-2270 in the peptidyl transferase center of the mitochondrial large ribosomal RNA (21S)
Synonyms:	FLJ22578
Note:	Immunogen Sequence Homology: Dog: 100%; Pig: 100%; Horse: 100%; Human: 100%; Bovine: 100%; Rabbit: 100%; Guinea pig: 100%; Mouse: 93%; Rat: 92%



[View online »](#)

Product images:



WB Suggested Anti-MRM1 Antibody Titration: 0.2-1 ug/ml; Positive Control: Human brain