

## Product datasheet for **TA343932**

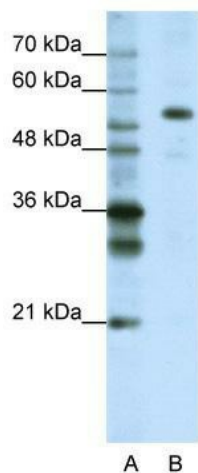
### CPSF7 Rabbit Polyclonal Antibody

#### Product data:

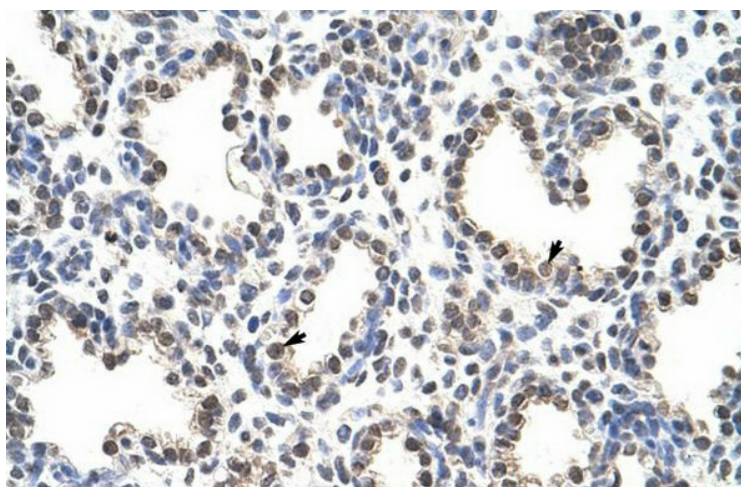
Product Type:	Primary Antibodies
Applications:	IHC, WB
Recommended Dilution:	WB, IHC
Reactivity:	Human
Host:	Rabbit
Isotype:	IgG
Clonality:	Polyclonal
Immunogen:	The immunogen for anti-FLJ12529 antibody: synthetic peptide directed towards the C terminal of human FLJ12529. Synthetic peptide located within the following region: GASGSSSRKRHRSRERSPSRSRESSRRHRDLLHNEDRHDDYFQERNREHE
Formulation:	Liquid. Purified antibody supplied in 1x PBS buffer with 0.09% (w/v) sodium azide and 2% sucrose.
Purification:	Protein A purified
Conjugation:	Unconjugated
Storage:	Store at -20°C as received.
Stability:	Stable for 12 months from date of receipt.
Predicted Protein Size:	52 kDa
Gene Name:	cleavage and polyadenylation specific factor 7
Database Link:	<a href="#">NP_079087</a> <a href="#">Entrez Gene 79869 Human</a> <a href="#">Q8N684</a>
Background:	The function remains unknown.
Synonyms:	CFIm59
Note:	Immunogen Sequence Homology: Dog: 100%; Pig: 100%; Rat: 100%; Horse: 100%; Human: 100%; Mouse: 100%; Bovine: 100%; Rabbit: 100%; Guinea pig: 100%



[View online »](#)

**Product images:**

WB Suggested Anti-FLJ12529 Antibody Titration: 1.25 ug/ml; Positive Control: HepG2 cell lysate; CPSF7 is supported by BioGPS gene expression data to be expressed in HepG2



Rabbit Anti-FLJ12529 Antibody; Paraffin Embedded Tissue: Human Lung; Cellular Data: Alveolar cells; Antibody Concentration: 4.0-8.0 ug/ml; Magnification: 400X