

Product datasheet for **TA343931**

mrpl24 Rabbit Polyclonal Antibody

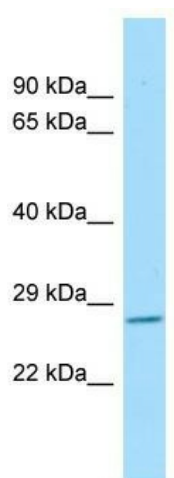
Product data:

Product Type:	Primary Antibodies
Applications:	WB
Recommended Dilution:	WB
Reactivity:	Rat
Host:	Rabbit
Isotype:	IgG
Clonality:	Polyclonal
Immunogen:	The immunogen for Anti-mrpl24 antibody is: synthetic peptide directed towards the C-terminal region of Rat mrpl24. Synthetic peptide located within the following region: GIVPETWTDGPKDTSVEDALERTYVPRCLKTLEEDVMEAMGIQETRRFKKI
Formulation:	Liquid. Purified antibody supplied in 1x PBS buffer with 0.09% (w/v) sodium azide and 2% sucrose. <i>Note that this product is shipped as lyophilized powder to China customers.</i>
Purification:	Affinity Purified
Conjugation:	Unconjugated
Storage:	Store at -20°C as received.
Stability:	Stable for 12 months from date of receipt.
Predicted Protein Size:	23 kDa
Gene Name:	mitochondrial ribosomal protein L24
Database Link:	NP_001007638 Entrez Gene 295224 Rat Q66H47
Background:	The function of this protein remains unknown.
Synonyms:	FLJ20917; L24mt; MGC9831; MGC22737; MRP-L18; MRP-L24
Note:	Immunogen Sequence Homology: Dog: 100%; Pig: 100%; Rat: 100%; Horse: 100%; Human: 100%; Mouse: 100%; Bovine: 100%; Rabbit: 100%; Guinea pig: 100%; Zebrafish: 77%



[View online »](#)

Product images:



Host: Rabbit; Target Name: mrpl24; Sample
Tissue: Rat Spleen lysates; Antibody Dilution: 1.0
ug/ml