

Product datasheet for **TA343928**

RBM42 Rabbit Polyclonal Antibody

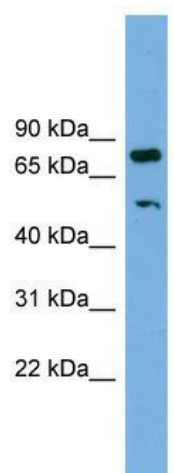
Product data:

Product Type:	Primary Antibodies
Applications:	WB
Recommended Dilution:	WB
Reactivity:	Human
Host:	Rabbit
Isotype:	IgG
Clonality:	Polyclonal
Immunogen:	The immunogen for anti-RBM42 antibody: synthetic peptide directed towards the middle region of human RBM42. Synthetic peptide located within the following region: RPRPPRPEPPPGLMALEVPEPLGEDKKKGKPEKLRKRCIRTAAGSSWEDPS
Formulation:	Liquid. Purified antibody supplied in 1x PBS buffer with 0.09% (w/v) sodium azide and 2% sucrose. <i>Note that this product is shipped as lyophilized powder to China customers.</i>
Purification:	Affinity Purified
Conjugation:	Unconjugated
Storage:	Store at -20°C as received.
Stability:	Stable for 12 months from date of receipt.
Predicted Protein Size:	50 kDa
Gene Name:	RNA binding motif protein 42
Database Link:	NP_077297 Entrez Gene 79171 Human Q9BTD8
Background:	RBM42 belongs to the RRM RBM42 family and it contains 1 RRM (RNA recognition motif) domain. The functions of RBM42 remain unknown.
Synonyms:	MGC10433
Note:	Immunogen Sequence Homology: Dog: 100%; Pig: 100%; Rat: 100%; Horse: 100%; Human: 100%; Mouse: 100%; Bovine: 100%; Rabbit: 100%; Guinea pig: 100%; Zebrafish: 83%



[View online »](#)

Product images:



WB Suggested Anti-RBM42 Antibody Titration:
0.2-1 ug/ml; ELISA Titer: 1: 12500; Positive
Control: HepG2 cell lysate