

Product datasheet for **TA343925**

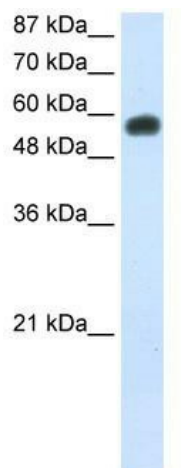
NOC4L Rabbit Polyclonal Antibody

Product data:

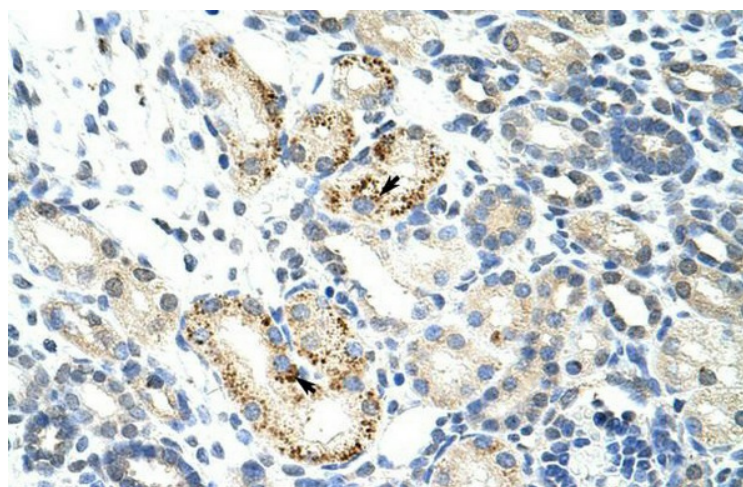
Product Type:	Primary Antibodies
Applications:	IHC, WB
Recommended Dilution:	WB, IHC
Reactivity:	Human
Host:	Rabbit
Isotype:	IgG
Clonality:	Polyclonal
Immunogen:	The immunogen for anti-NOC4L antibody: synthetic peptide directed towards the C terminal of human NOC4L. Synthetic peptide located within the following region: CRVLVHRPHGPELDADPYDPGEEDPAQSRALESSLWELQALQRHYHPEVS
Formulation:	Liquid. Purified antibody supplied in 1x PBS buffer with 0.09% (w/v) sodium azide and 2% sucrose.
Purification:	Affinity Purified
Conjugation:	Unconjugated
Storage:	Store at -20°C as received.
Stability:	Stable for 12 months from date of receipt.
Predicted Protein Size:	57 kDa
Gene Name:	nucleolar complex associated 4 homolog
Database Link:	NP_076983 Entrez Gene 79050 Human Q9BVI4
Background:	NOC4L plays a specific role in biogenesis of 40 S subunit of ribosome.
Synonyms:	NET49; NOC4; UTP19
Note:	Immunogen Sequence Homology: Human: 100%; Pig: 93%; Horse: 93%; Bovine: 93%; Rat: 86%; Mouse: 79%; Guinea pig: 79%



[View online »](#)

Product images:

WB Suggested Anti-NOC4L Antibody Titration:
0.2-1 ug/ml; Positive Control: Jurkat cell lysate



Rabbit Anti-NOC4L Antibody; Paraffin Embedded
Tissue: Human Kidney; Cellular Data: Epithelial
cells of renal tubule; Antibody Concentration: 4.0-
8.0 ug/ml; Magnification: 400X