

## Product datasheet for **TA343924**

### **NOC4L Rabbit Polyclonal Antibody**

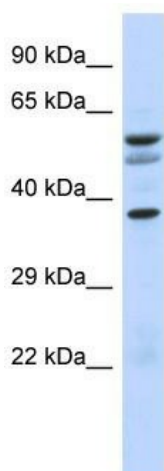
#### **Product data:**

<b>Product Type:</b>	Primary Antibodies
<b>Applications:</b>	WB
<b>Recommended Dilution:</b>	WB
<b>Reactivity:</b>	Human
<b>Host:</b>	Rabbit
<b>Isotype:</b>	IgG
<b>Clonality:</b>	Polyclonal
<b>Immunogen:</b>	The immunogen for Anti-NOC4L antibody is: synthetic peptide directed towards the N-terminal region of Human NOC4L. Synthetic peptide located within the following region: RSEANAVFDILAVLQSEDQEEIQEAVRTCSRLFGALLERGERLFGVGLPSE
<b>Formulation:</b>	Liquid. Purified antibody supplied in 1x PBS buffer with 0.09% (w/v) sodium azide and 2% sucrose.
<b>Purification:</b>	Affinity Purified
<b>Conjugation:</b>	Unconjugated
<b>Storage:</b>	Store at -20°C as received.
<b>Stability:</b>	Stable for 12 months from date of receipt.
<b>Predicted Protein Size:</b>	56 kDa
<b>Gene Name:</b>	nucleolar complex associated 4 homolog
<b>Database Link:</b>	<a href="#">NP_076983</a> <a href="#">Entrez Gene 79050 Human</a> <a href="#">Q9BVI4</a>
<b>Background:</b>	NOC4L plays a specific role in biogenesis of 40 S subunit of ribosome.
<b>Synonyms:</b>	NET49; NOC4; UTP19
<b>Note:</b>	Immunogen Sequence Homology: Pig: 100%; Horse: 100%; Human: 100%; Bovine: 100%; Dog: 85%; Rat: 79%



[View online »](#)

## Product images:



Host: Rabbit

Target Name: NOC4L

Sample Tissue: Fetal Brain Lysate

Antibody Dilution: 1.0 $\mu$ g/ml

Host: Rabbit; Target Name: NOC4L; Sample Tissue: Fetal Brain lysates; Antibody Dilution: 1.0 ug/ml