

## Product datasheet for **TA343921**

### NOL6 Rabbit Polyclonal Antibody

#### Product data:

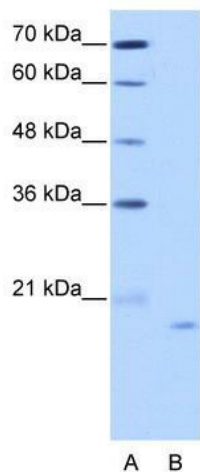
Product Type:	Primary Antibodies
Applications:	IHC, WB
Recommended Dilution:	WB, IHC
Reactivity:	Human
Host:	Rabbit
Isotype:	IgG
Clonality:	Polyclonal
Immunogen:	The immunogen for anti-NOL6 antibody: synthetic peptide directed towards the C terminal of human NOL6. Synthetic peptide located within the following region: VIGVLWKPTSFPKASSTKGRMVMSRGGELVMVPNVEAILEDFAVLG
Formulation:	Liquid. Purified antibody supplied in 1x PBS buffer with 0.09% (w/v) sodium azide and 2% sucrose.
Purification:	Protein A purified
Conjugation:	Unconjugated
Storage:	Store at -20°C as received.
Stability:	Stable for 12 months from date of receipt.
Predicted Protein Size:	22 kDa
Gene Name:	nucleolar protein 6
Database Link:	<a href="#">NP_075068</a> <a href="#">Entrez Gene 65083 Human</a> <a href="#">Q9H6R4</a>
Background:	NOL6 is a nucleolar RNA-associated protein that is highly conserved between species. RNase treatment of permeabilized cells indicates that the nucleolar localization is RNA dependent. Further studies suggest that the protein is associated with ribosome biogenesis through an interaction with pre-rRNA primary transcripts.
Synonyms:	bA311H10.1; NRAP; UTP22
Note:	Immunogen Sequence Homology: Pig: 100%; Rat: 100%; Human: 100%; Guinea pig: 100%; Dog: 93%; Horse: 93%; Mouse: 93%; Rabbit: 93%; Bovine: 86%



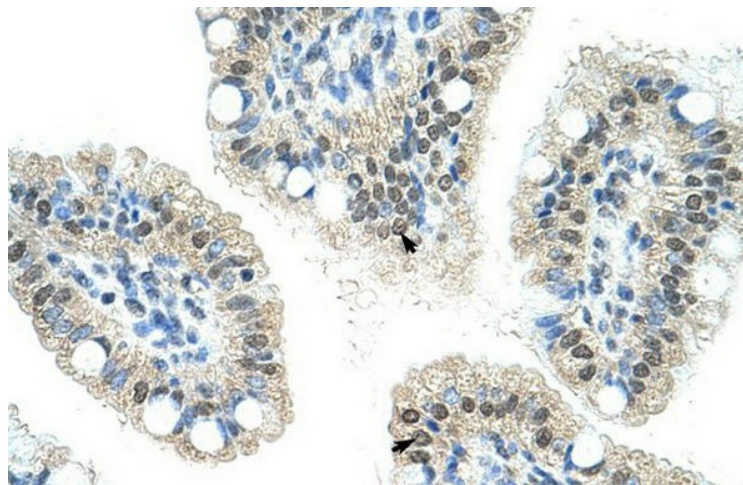
[View online »](#)

Protein Families: Druggable Genome

**Product images:**



WB Suggested Anti-NOL6 Antibody Titration: 2.5 ug/ml; Positive Control: HepG2 cell lysate NOL6 is supported by BioGPS gene expression data to be expressed in HepG2



Rabbit Anti-NOL6 Antibody; Paraffin Embedded Tissue: Human Intestine; Cellular Data: Epithelial cells of intestinal villas; Antibody Concentration: 4.0-8.0 ug/ml; Magnification: 400X