

Product datasheet for **TA343918**

MTHFSD Rabbit Polyclonal Antibody

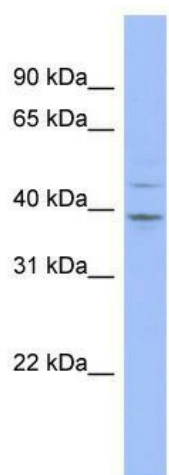
Product data:

Product Type:	Primary Antibodies
Applications:	WB
Recommended Dilution:	WB
Reactivity:	Human
Host:	Rabbit
Isotype:	IgG
Clonality:	Polyclonal
Immunogen:	The immunogen for anti-MTHFSD antibody: synthetic peptide directed towards the N terminal of human MTHFSD. Synthetic peptide located within the following region: MEPRAGVSKQDIREQIWGYMESQNLADFP RPVHHRIPNFKG SYLACQNIK
Formulation:	Liquid. Purified antibody supplied in 1x PBS buffer with 0.09% (w/v) sodium azide and 2% sucrose. <i>Note that this product is shipped as lyophilized powder to China customers.</i>
Purification:	Affinity Purified
Conjugation:	Unconjugated
Storage:	Store at -20°C as received.
Stability:	Stable for 12 months from date of receipt.
Predicted Protein Size:	42 kDa
Gene Name:	methenyltetrahydrofolate synthetase domain containing
Database Link:	NP_073601 Entrez Gene 64779 Human Q2M296
Background:	The function remains unknowns.
Synonyms:	FLJ12998; FLJ13893; MGC138262; MGC138264; MGC177233
Note:	Immunogen Sequence Homology: Dog: 100%; Horse: 100%; Human: 100%; Bovine: 100%; Rabbit: 100%; Pig: 93%; Zebrafish: 90%; Mouse: 79%; Guinea pig: 79%



[View online »](#)

Product images:



WB Suggested Anti-MTHFSD Antibody Titration:
0.2-1 ug/ml; ELISA Titer: 1: 312500; Positive
Control: OVCAR-3 cell lysate