

## Product datasheet for **TA343917**

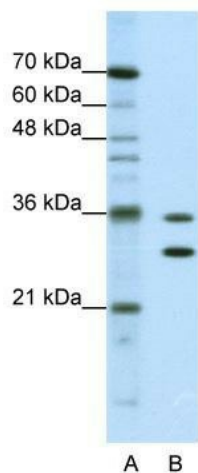
### MTHFSD Rabbit Polyclonal Antibody

#### Product data:

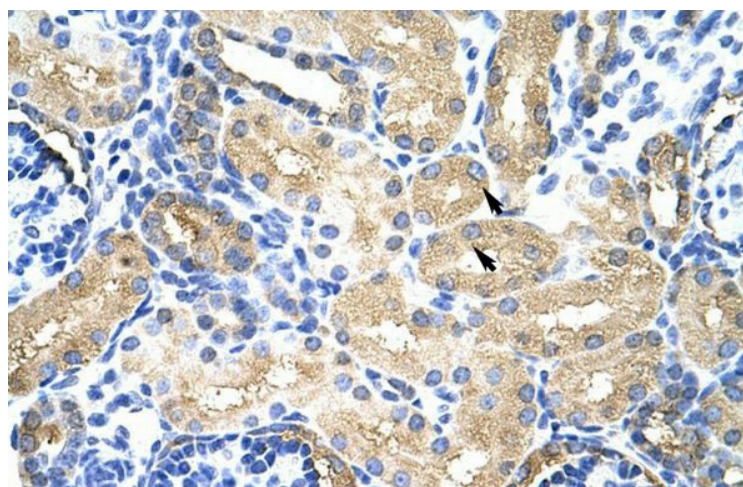
Product Type:	Primary Antibodies
Applications:	IHC, WB
Recommended Dilution:	WB, IHC
Reactivity:	Human
Host:	Rabbit
Isotype:	IgG
Clonality:	Polyclonal
Immunogen:	The immunogen for anti-MTHFSD antibody: synthetic peptide directed towards the N terminal of human MTHFSD. Synthetic peptide located within the following region: EVKVDPKPLEGVRLLVLSKKTLLVPTPRLRTGLFNKITPPPGATKDIL
Formulation:	Liquid. Purified antibody supplied in 1x PBS buffer with 0.09% (w/v) sodium azide and 2% sucrose.
Purification:	Protein A purified
Conjugation:	Unconjugated
Storage:	Store at -20°C as received.
Stability:	Stable for 12 months from date of receipt.
Predicted Protein Size:	41 kDa
Gene Name:	methenyltetrahydrofolate synthetase domain containing
Database Link:	<a href="#">NP_073601</a> <a href="#">Entrez Gene 64779 Human</a> <a href="#">Q2M296</a>
Background:	The function remains unknowns.
Synonyms:	FLJ12998; FLJ13893; MGC138262; MGC138264; MGC177233
Note:	Immunogen Sequence Homology: Dog: 100%; Horse: 100%; Human: 100%; Mouse: 100%; Bovine: 100%; Pig: 93%; Rat: 93%; Rabbit: 92%; Guinea pig: 90%; Zebrafish: 77%



[View online »](#)

**Product images:**

WB Suggested Anti-MTHFSD Antibody Titration:  
0.625 ug/ml; ELISA Titer: 1: 1562500; Positive  
Control: Jurkat cell lysate



Rabbit Anti-MTHFSD Antibody; Paraffin  
Embedded Tissue: Human Kidney; Cellular Data:  
Epithelial cells of renal tubule; Antibody  
Concentration: 4.0-8.0 ug/ml; Magnification: 400X