

Product datasheet for **TA343916**

DGCR8 Rabbit Polyclonal Antibody

Product data:

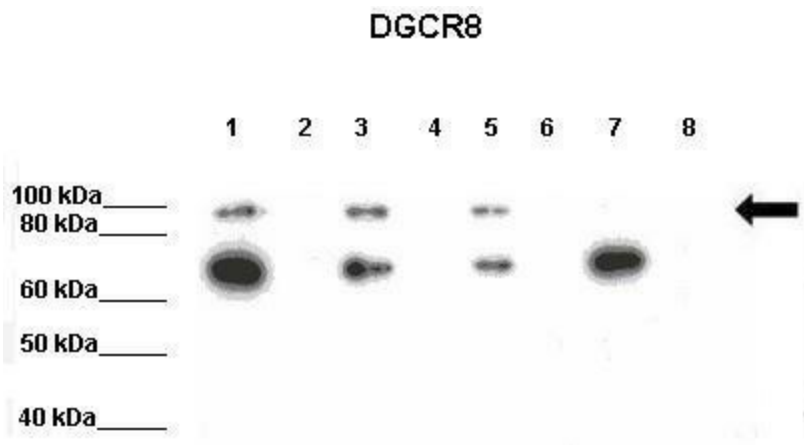
Product Type:	Primary Antibodies
Applications:	IHC, WB
Recommended Dilution:	WB, IHC
Reactivity:	Human
Host:	Rabbit
Isotype:	IgG
Clonality:	Polyclonal
Immunogen:	The immunogen for anti-DGCR8 antibody: synthetic peptide directed towards the N terminal of human DGCR8. Synthetic peptide located within the following region: DKKDEENELDQEKRVEYAVLDELEDFDNLLELDEEGAGGFTAKAIVQRDR
Formulation:	Liquid. Purified antibody supplied in 1x PBS buffer with 0.09% (w/v) sodium azide and 2% sucrose. <i>Note that this product is shipped as lyophilized powder to China customers.</i>
Purification:	Affinity Purified
Conjugation:	Unconjugated
Storage:	Store at -20°C as received.
Stability:	Stable for 12 months from date of receipt.
Predicted Protein Size:	85 kDa
Gene Name:	DGCR8 microprocessor complex subunit
Database Link:	NP_073557 Entrez Gene 54487 Human Q8WYQ5
Background:	DGCR8 contains 2 DRBM (double-stranded RNA-binding) domains and 1 WW domain. It may play a part in the etiology of the velocardiofacial/DiGeorge syndrome (VCFS/DGS), a developmental disorder characterized by structural and functional palate anomalies, conotruncal cardiac malformations, immunodeficiency, hypocalcemia, and typical facial anomalies.
Synonyms:	C22orf12; DGCRK6; Gy1; pasha



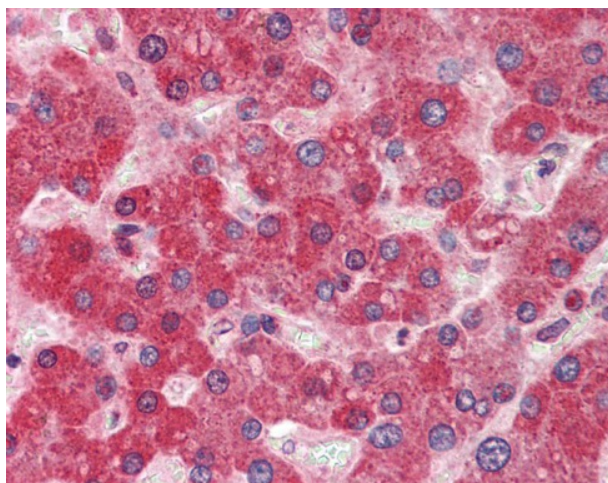
[View online »](#)

Note: Immunogen Sequence Homology: Dog: 100%; Pig: 100%; Rat: 100%; Human: 100%; Mouse: 100%; Guinea pig: 100%; Horse: 93%; Rabbit: 93%; Bovine: 85%; Zebrafish: 77%

Product images:



WB Suggested Anti-DGCR8 Antibody; Positive Control: Lane 1: Cytoplasmic fraction of mouse back skin lysate Lane 2: Nuclear fraction of mouse back skin lysate Lane 3: Cytoplasmic fraction of mouse back skin lysate Lane 4: Nuclear fraction of mouse back ski



Liver