

## Product datasheet for **TA343914**

### TIA1 Rabbit Polyclonal Antibody

#### Product data:

Product Type:	Primary Antibodies
Applications:	WB
Recommended Dilution:	WB
Reactivity:	Human
Host:	Rabbit
Isotype:	IgG
Clonality:	Polyclonal
Immunogen:	The immunogen for anti-TIA1 antibody: synthetic peptide directed towards the N terminal of human TIA1. Synthetic peptide located within the following region: MGKEVKVNWATTPSSQKQKDTSSSTVSTQRSQDHFHVFGDLSPEITTD
Formulation:	Liquid. Purified antibody supplied in 1x PBS buffer with 0.09% (w/v) sodium azide and 2% sucrose. <i>Note that this product is shipped as lyophilized powder to China customers.</i>
Purification:	Affinity Purified
Conjugation:	Unconjugated
Storage:	Store at -20°C as received.
Stability:	Stable for 12 months from date of receipt.
Predicted Protein Size:	43 kDa
Gene Name:	TIA1 cytotoxic granule-associated RNA binding protein
Database Link:	<a href="#">NP_071505</a> <a href="#">Entrez Gene 7072 Human</a> <a href="#">P31483</a>



[View online »](#)

**Background:**

TIA1 is a member of a RNA-binding protein family and possesses nucleolytic activity against cytotoxic lymphocyte (CTL) target cells. It has been suggested that this protein may be involved in the induction of apoptosis as it preferentially recognizes poly(A) homopolymers and induces DNA fragmentation in CTL targets. The major granule-associated species is a 15-kDa protein that is thought to be derived from the carboxyl terminus of the 40-kDa product by proteolytic processing. The product encoded by this gene is a member of a RNA-binding protein family and possesses nucleolytic activity against cytotoxic lymphocyte (CTL) target cells. It has been suggested that this protein may be involved in the induction of apoptosis as it preferentially recognizes poly(A) homopolymers and induces DNA fragmentation in CTL targets. The major granule-associated species is a 15-kDa protein that is thought to be derived from the carboxyl terminus of the 40-kDa product by proteolytic processing. Alternative splicing resulting in different isoforms of this gene product has been described in the literature.

**Synonyms:**

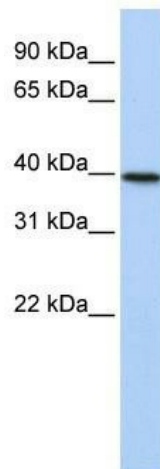
TIA-1; WDM

**Note:**

Immunogen Sequence Homology: Dog: 100%; Pig: 100%; Rat: 100%; Horse: 100%; Human: 100%; Mouse: 100%; Bovine: 100%; Rabbit: 100%; Guinea pig: 100%

**Protein Families:**

Druggable Genome

**Product images:**

WB Suggested Anti-TIA1 Antibody Titration: 0.2-1 ug/ml; ELISA Titer: 1: 12500; Positive Control: 721\_B cell lysate TIA1 is strongly supported by BioGPS gene expression data to be expressed in Human 721\_B cells