

## Product datasheet for **TA343913**

### EIF4H Rabbit Polyclonal Antibody

#### Product data:

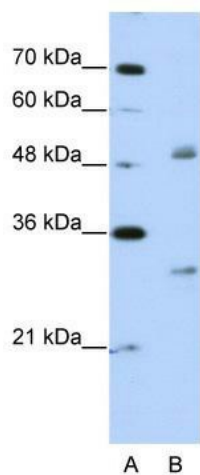
Product Type:	Primary Antibodies
Applications:	IHC, WB
Recommended Dilution:	WB, IHC
Reactivity:	Human
Host:	Rabbit
Isotype:	IgG
Clonality:	Polyclonal
Immunogen:	The immunogen for anti-WBSCR1 antibody: synthetic peptide directed towards the middle region of human WBSCR1. Synthetic peptide located within the following region: DSRDDFNSGFRDDFLGGRGGSRPGRRTGPPMGSRFRDGPPLRGSNMDFR
Formulation:	Liquid. Purified antibody supplied in 1x PBS buffer with 0.09% (w/v) sodium azide and 2% sucrose.
Purification:	Protein A purified
Conjugation:	Unconjugated
Storage:	Store at -20°C as received.
Stability:	Stable for 12 months from date of receipt.
Predicted Protein Size:	27 kDa
Gene Name:	eukaryotic translation initiation factor 4H
Database Link:	<a href="#">NP_071496</a> <a href="#">Entrez Gene 7458 Human</a> <a href="#">Q15056</a>
Background:	WBSCR1 is one of the translation initiation factors, which functions to stimulate the initiation of protein synthesis at the level of mRNA utilization. This gene encodes one of the translation initiation factors, which functions to stimulate the initiation of protein synthesis at the level of mRNA utilization. This gene is deleted in Williams syndrome, a multisystem developmental disorder caused by the deletion of contiguous genes at 7q11.23. Alternative splicing of this gene generates 2 transcript variants.
Synonyms:	eIF-4H; WBSCR1; WSCR1



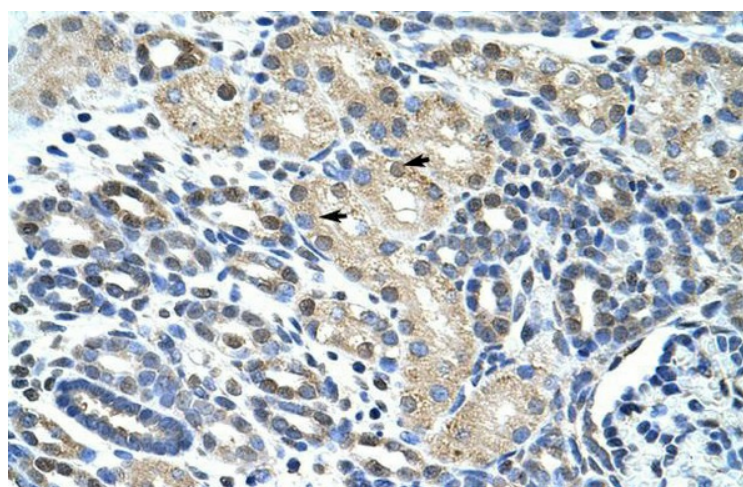
[View online »](#)

**Note:** Immunogen Sequence Homology: Dog: 100%; Pig: 100%; Human: 100%; Rat: 93%; Mouse: 93%; Horse: 86%

### Product images:



WB Suggested Anti-WBSCR1 Antibody Titration: 2.5 ug/ml; Positive Control: Jurkat cell lysate EIF4H is supported by BioGPS gene expression data to be expressed in Jurkat



Rabbit Anti-WBSCR1 Antibody; Paraffin Embedded Tissue: Human Kidney; Cellular Data: Epithelial cells of renal tubule; Antibody Concentration: 4.0-8.0 ug/ml; Magnification: 400X