

## Product datasheet for **TA343911**

### **RBM26 Rabbit Polyclonal Antibody**

#### **Product data:**

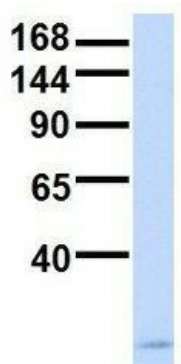
<b>Product Type:</b>	Primary Antibodies
<b>Applications:</b>	WB
<b>Recommended Dilution:</b>	WB
<b>Reactivity:</b>	Human
<b>Host:</b>	Rabbit
<b>Isotype:</b>	IgG
<b>Clonality:</b>	Polyclonal
<b>Immunogen:</b>	The immunogen for anti-RBM26 antibody: synthetic peptide directed towards the middle region of human RBM26. Synthetic peptide located within the following region: PAALKAAQKTLVSTSAVDNNEAQKKKQEALKLQQDVRKRKQEILEKHIE
<b>Formulation:</b>	Liquid. Purified antibody supplied in 1x PBS buffer with 0.09% (w/v) sodium azide and 2% sucrose. <i>Note that this product is shipped as lyophilized powder to China customers.</i>
<b>Purification:</b>	Affinity Purified
<b>Conjugation:</b>	Unconjugated
<b>Storage:</b>	Store at -20°C as received.
<b>Stability:</b>	Stable for 12 months from date of receipt.
<b>Predicted Protein Size:</b>	61 kDa
<b>Gene Name:</b>	RNA binding motif protein 26
<b>Database Link:</b>	<a href="#">NP_071401</a> <a href="#">Entrez Gene 64062 Human</a> <a href="#">Q5T8P6</a>
<b>Background:</b>	RBM26 contains 1 C3H1-type zinc finger and 2 RRM (RNA recognition motif) domains. The function of RBM26 remains unknown.
<b>Synonyms:</b>	ARRS2; C13orf10; PPP1R132; PRO1777; SE70-2; ZC3H17
<b>Note:</b>	Immunogen Sequence Homology: Dog: 100%; Pig: 100%; Rat: 100%; Horse: 100%; Human: 100%; Mouse: 100%; Bovine: 100%; Rabbit: 100%; Zebrafish: 79%



[View online »](#)

Product images:

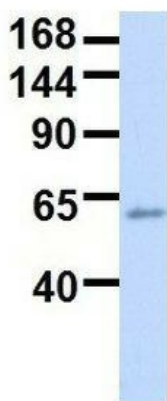
### RBM26



Rabbit Anti-RBM26  
 Sample Type: Human Fetal Brain  
 Antibody Concentration: 1ug/mL

Host: Rabbit; Target Name: RBM26; Sample Tissue: Human Fetal Brain; Antibody Dilution: 1.0 ug/ml

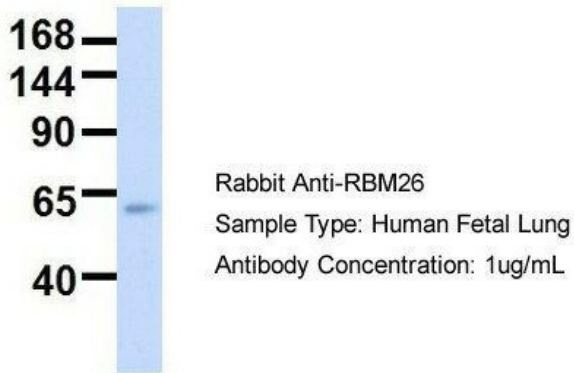
### RBM26



Rabbit Anti-RBM26  
 Sample Type: Human Fetal Heart  
 Antibody Concentration: 1ug/mL

Host: Rabbit; Target Name: RBM26; Sample Tissue: Human Fetal Heart; Antibody Dilution: 1.0 ug/ml

## RBM26



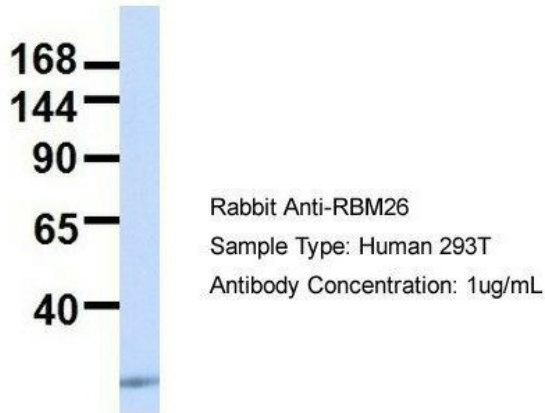
Host: Rabbit; Target Name: RBM26; Sample Tissue: Human Fetal Lung; Antibody Dilution: 1.0 ug/ml

## RBM26

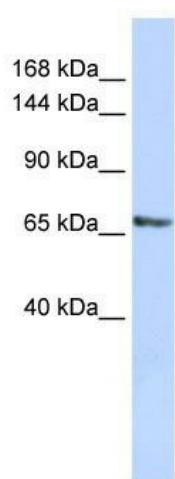


Host: Rabbit; Target Name: RBM26; Sample Tissue: Human Adult Placenta; Antibody Dilution: 1.0 ug/ml

## RBM26



Host: Rabbit; Target Name: RBM26; Sample Tissue: Human 293T; Antibody Dilution: 1.0 ug/ml; There is BioGPS gene expression data showing that RBM26 is expressed in HEK293T



WB Suggested Anti-RBM26 Antibody Titration:  
0.2-1 ug/ml; ELISA Titer: 1: 62500; Positive  
Control: HepG2 cell lysate; There is BioGPS gene  
expression data showing that RBM26 is  
expressed in HepG2