

Product datasheet for **TA343909**

ELAVL4 Rabbit Polyclonal Antibody

Product data:

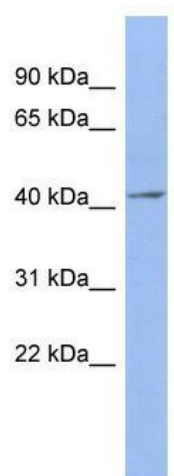
Product Type:	Primary Antibodies
Applications:	WB
Recommended Dilution:	WB
Reactivity:	Human
Host:	Rabbit
Isotype:	IgG
Clonality:	Polyclonal
Immunogen:	The immunogen for anti-ELAVL4 antibody: synthetic peptide directed towards the N terminal of human ELAVL4. Synthetic peptide located within the following region: MQTGATDDSKTNLIVNYLPQNMTQEEFRSLFGSIGEIESCKLVRDKITG
Formulation:	Liquid. Purified antibody supplied in 1x PBS buffer with 0.09% (w/v) sodium azide and 2% sucrose. <i>Note that this product is shipped as lyophilized powder to China customers.</i>
Purification:	Affinity Purified
Conjugation:	Unconjugated
Storage:	Store at -20°C as received.
Stability:	Stable for 12 months from date of receipt.
Predicted Protein Size:	42 kDa
Gene Name:	ELAV like neuron-specific RNA binding protein 4
Database Link:	NP_068771 Entrez Gene 1996 Human P26378
Background:	ELAVL4 may play a role in neuron-specific RNA processing. ELAVL4 protects CDKN1A mRNA from decay by binding to its 3' UTR. By similarity, ELAVL4 binds to AU-rich sequences (AREs) of target mRNAs, including VEGF and FOS mRNA.
Synonyms:	HUD; PNEM
Note:	Immunogen Sequence Homology: Human: 100%; Dog: 93%; Pig: 93%; Rat: 93%; Horse: 93%; Mouse: 93%; Bovine: 93%; Rabbit: 93%; Guinea pig: 93%; Zebrafish: 92%



[View online »](#)

Protein Families: Druggable Genome

Product images:



WB Suggested Anti-ELAVL4 Antibody Titration:
0.2-1 ug/ml; ELISA Titer: 1: 62500; Positive
Control: NCI-H226 cell lysate