

## Product datasheet for **TA343908**

### **BRUNOL5 (CELF5) Rabbit Polyclonal Antibody**

#### **Product data:**

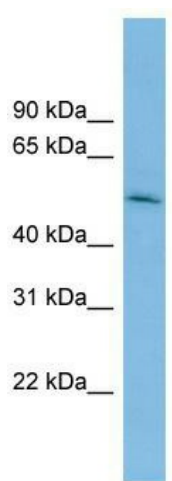
Product Type:	Primary Antibodies
Applications:	WB
Recommended Dilution:	WB
Reactivity:	Human
Host:	Rabbit
Isotype:	IgG
Clonality:	Polyclonal
Immunogen:	The immunogen for anti-BRUNOL5 antibody: synthetic peptide directed towards the middle region of human BRUNOL5. Synthetic peptide located within the following region: GVVPFPGGHPALETYANGLVYPYPAQSPTVAETLHPAFSGVQQTAMYPT
Formulation:	Liquid. Purified antibody supplied in 1x PBS buffer with 0.09% (w/v) sodium azide and 2% sucrose. <i>Note that this product is shipped as lyophilized powder to China customers.</i>
Purification:	Affinity Purified
Conjugation:	Unconjugated
Storage:	Store at -20°C as received.
Stability:	Stable for 12 months from date of receipt.
Predicted Protein Size:	52 kDa
Gene Name:	CUGBP, Elav-like family member 5
Database Link:	<a href="#">NP_068757</a> <a href="#">Entrez Gene 60680 Human</a> <a href="#">Q8N6W0</a>
Background:	Members of the CELF/BRUNOL protein family contain two N-terminal RNA recognition motif (RRM) domains, one C-terminal RRM domain, and a divergent segment of 160-230 aa between the second and third RRM domains. Members of this protein family regulate pre-mRNA alternative splicing and may also be involved in mRNA editing, and translation. Alternatively spliced transcript variants have been identified in this gene.
Synonyms:	BRUNOL-5; BRUNOL5; CELF-5



[View online »](#)

**Note:** Immunogen Sequence Homology: Dog: 100%; Pig: 100%; Rat: 100%; Horse: 100%; Human: 100%; Mouse: 100%; Bovine: 100%; Guinea pig: 100%; Rabbit: 85%; Zebrafish: 85%

## Product images:



WB Suggested Anti-BRUNOL5 Antibody Titration:  
0.2-1 ug/ml; ELISA Titer: 1: 62500; Positive  
Control: THP-1 cell lysate