

Product datasheet for **TA343905**

PTBP2 Rabbit Polyclonal Antibody

Product data:

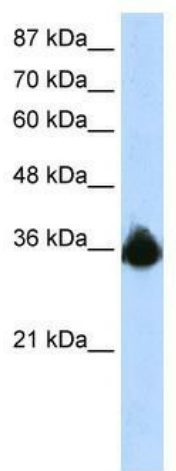
Product Type:	Primary Antibodies
Applications:	WB
Recommended Dilution:	WB
Reactivity:	Human
Host:	Rabbit
Isotype:	IgG
Clonality:	Polyclonal
Immunogen:	The immunogen for anti-PTBP2 antibody: synthetic peptide directed towards the N terminal of human PTBP2. Synthetic peptide located within the following region: MDGIVTEVAVGVKRGSDSELLSGSVLSSPNSNMSSMVTANGNDSKKFKGE
Formulation:	Liquid. Purified antibody supplied in 1x PBS buffer with 0.09% (w/v) sodium azide and 2% sucrose. <i>Note that this product is shipped as lyophilized powder to China customers.</i>
Purification:	Protein A purified
Conjugation:	Unconjugated
Storage:	Store at -20°C as received.
Stability:	Stable for 12 months from date of receipt.
Predicted Protein Size:	40 kDa
Gene Name:	polypyrimidine tract binding protein 2
Database Link:	NP_067013 Entrez Gene 58155 Human Q9UKA9
Background:	PTBP2 binds to the intronic cluster of RNA regulatory elements, downstream control sequence (DCS). It is implicated in controlling the assembly of other splicing-regulatory proteins. This protein is very similar to the polypyrimidine tract binding protein but it is expressed primarily in the brain.
Synonyms:	brPTB; nPTB; PTBLP



[View online »](#)

Note: Immunogen Sequence Homology: Dog: 100%; Pig: 100%; Rat: 100%; Human: 100%; Mouse: 100%; Rabbit: 100%; Guinea pig: 100%; Bovine: 93%; Zebrafish: 92%

Product images:



WB Suggested Anti-PTBP2 Antibody Titration:
1.25 ug/ml; Positive Control: HepG2 cell lysate