

## Product datasheet for **TA343902**

### Mbnl2 Rabbit Polyclonal Antibody

#### Product data:

Product Type:	Primary Antibodies
Applications:	WB
Recommended Dilution:	WB
Reactivity:	Rat
Host:	Rabbit
Isotype:	IgG
Clonality:	Polyclonal
Immunogen:	The immunogen for Anti-Mbnl2 antibody is: synthetic peptide directed towards the middle region of RAT Mbnl2. Synthetic peptide located within the following region: IACFDSLKGRCSRENCKYLHPPTHKTQLEINGRNNLIQKTAAMLAQQ
Formulation:	Liquid. Purified antibody supplied in 1x PBS buffer with 0.09% (w/v) sodium azide and 2% sucrose. <i>Note that this product is shipped as lyophilized powder to China customers.</i>
Purification:	Affinity Purified
Conjugation:	Unconjugated
Storage:	Store at -20°C as received.
Stability:	Stable for 12 months from date of receipt.
Predicted Protein Size:	41 kDa
Gene Name:	muscleblind-like splicing regulator 2
Database Link:	<a href="#">NP_001104534</a> <a href="#">Entrez Gene 680445 Rat F2Z3T4</a>



[View online »](#)

**Background:**

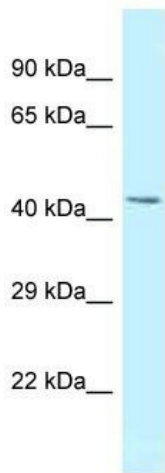
Mbnl2 mediates pre-mRNA alternative splicing regulation. It acts either as activator or repressor of splicing on specific pre-mRNA targets. It inhibits cardiac troponin-T (TNNT2) pre-mRNA exon inclusion but induces insulin receptor (IR) pre-mRNA exon inclusion in muscle. It antagonizes the alternative splicing activity pattern of CELF proteins. RNA-binding protein that binds to 5'ACACCC-3' core sequence, termed zipcode, within the 3' UTR of ITGA3. It binds to CUG triplet repeat expansion in myotonic dystrophy muscle cells by sequestering the target RNAs. It seems to regulate expression and localization of ITGA3 by transporting it from the nucleus to cytoplasm at adhesion plaques. It may play a role in myotonic dystrophy pathophysiology (DM).

**Synonyms:**

DKFZp781H1296; MBLL; MBLL39; MGC120625; MGC120626; MGC120628; MLP1; OTTHUMP00000178763; PRO2032

**Note:**

Immunogen Sequence Homology: Dog: 100%; Pig: 100%; Rat: 100%; Horse: 100%; Human: 100%; Mouse: 100%; Bovine: 100%; Rabbit: 100%; Zebrafish: 100%; Guinea pig: 100%

**Product images:**

Host: Rabbit  
Target Name: Mbnl2  
Sample Tissue: Rat Brain Lysate  
Antibody Dilution: 1.0 $\mu$ g/ml

Host: Rabbit; Target Name: Mbnl2; Sample Tissue: Rat Brain lysates; Antibody Dilution: 1.0 ug/ml