

Product datasheet for **TA343901**

CWC22 Rabbit Polyclonal Antibody

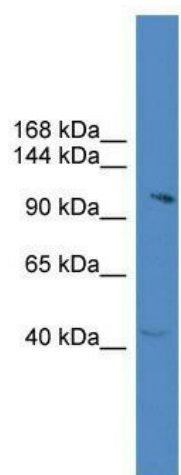
Product data:

Product Type:	Primary Antibodies
Applications:	WB
Recommended Dilution:	WB
Reactivity:	Human
Host:	Rabbit
Isotype:	IgG
Clonality:	Polyclonal
Immunogen:	The immunogen for anti-KIAA1604 antibody: synthetic peptide directed towards the C terminal of human KIAA1604. Synthetic peptide located within the following region: RSKSKEMNRKHSGRSDEDRYQNGAERRWEKSSRYSEQSRESKKNQDRRR
Formulation:	Liquid. Purified antibody supplied in 1x PBS buffer with 0.09% (w/v) sodium azide and 2% sucrose. <i>Note that this product is shipped as lyophilized powder to China customers.</i>
Purification:	Affinity Purified
Conjugation:	Unconjugated
Storage:	Store at -20°C as received.
Stability:	Stable for 12 months from date of receipt.
Predicted Protein Size:	105 kDa
Gene Name:	CWC22 homolog, spliceosome-associated protein
Database Link:	NP_065994 Entrez Gene 57703 Human Q9HCG8
Background:	KIAA1604 may be involved in pre-mRNA splicing.
Synonyms:	EIF4GL; fSAPb; NCM
Note:	Immunogen Sequence Homology: Pig: 100%; Human: 100%; Horse: 93%; Dog: 86%; Bovine: 86%; Guinea pig: 86%; Rat: 83%; Mouse: 83%



[View online »](#)

Product images:



WB Suggested Anti-KIAA1604 Antibody Titration:
0.2-1 ug/ml; ELISA Titer: 1: 62500; Positive
Control: Hela cell lysate