

Product datasheet for **TA343900**

GW182 (TNRC6A) Rabbit Polyclonal Antibody

Product data:

Product Type:	Primary Antibodies
Applications:	WB
Recommended Dilution:	WB
Reactivity:	Human
Host:	Rabbit
Isotype:	IgG
Clonality:	Polyclonal
Immunogen:	The immunogen for anti-TNRC6A antibody: synthetic peptide directed towards the N terminal of human TNRC6A. Synthetic peptide located within the following region: RELEASEAKATKDVERNLSRDLVQEEQLMEEKKKKKDDKKKKEAAQKKATEQ
Formulation:	Liquid. Purified antibody supplied in 1x PBS buffer with 0.09% (w/v) sodium azide and 2% sucrose.
Purification:	Affinity Purified
Conjugation:	Unconjugated
Storage:	Store at -20°C as received.
Stability:	Stable for 12 months from date of receipt.
Predicted Protein Size:	210 kDa
Gene Name:	trinucleotide repeat containing 6A
Database Link:	NP_055309 Entrez Gene 27327 Human Q8NDV7



[View online »](#)

Background:

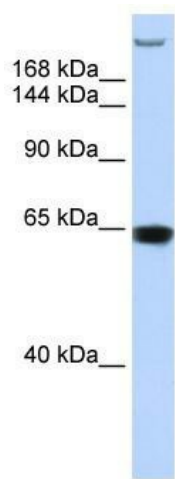
TNRC6A is a member of the trinucleotide repeat containing 6 protein family. The protein functions in post-transcriptional gene silencing through the RNA interference (RNAi) and microRNA pathways. The protein associates with messenger RNAs and Argonaute proteins in cytoplasmic bodies known as GW-bodies or P-bodies. Inhibiting expression of this gene delocalizes other GW-body proteins and impairs RNAi and microRNA-induced gene silencing. This gene encodes a member of the trinucleotide repeat containing 6 protein family. The protein functions in post-transcriptional gene silencing through the RNA interference (RNAi) and microRNA pathways. The protein associates with messenger RNAs and Argonaute proteins in cytoplasmic bodies known as GW-bodies or P-bodies. Inhibiting expression of this gene delocalizes other GW-body proteins and impairs RNAi and microRNA-induced gene silencing. Publication Note: This RefSeq record includes a subset of the publications that are available for this gene. Please see the Entrez Gene record to access additional publications.

Synonyms:

CAGH26; GW1; GW182; TNRC6

Note:

Immunogen Sequence Homology: Horse: 100%; Human: 100%; Mouse: 100%; Dog: 93%

Product images:

WB Suggested Anti-TNRC6A Antibody Titration:
0.2-1 ug/ml; ELISA Titer: 1: 62500; Positive
Control: MCF7 cell lysate