

Product datasheet for **TA343899**

MIF4GD Rabbit Polyclonal Antibody

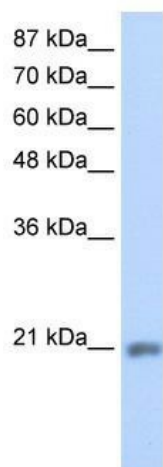
Product data:

Product Type:	Primary Antibodies
Applications:	IHC, WB
Recommended Dilution:	WB, IHC
Reactivity:	Human
Host:	Rabbit
Isotype:	IgG
Clonality:	Polyclonal
Immunogen:	The immunogen for anti-MIF4GD antibody: synthetic peptide directed towards the C terminal of human MIF4GD. Synthetic peptide located within the following region: LFVLIRDGFLPTGLSSLAQLLLLLEIIEFRAAGWKTTPAAHKYYYSEVSD
Formulation:	Liquid. Purified antibody supplied in 1x PBS buffer with 0.09% (w/v) sodium azide and 2% sucrose. <i>Note that this product is shipped as lyophilized powder to China customers.</i>
Purification:	Protein A purified
Conjugation:	Unconjugated
Storage:	Store at -20°C as received.
Stability:	Stable for 12 months from date of receipt.
Predicted Protein Size:	28 kDa
Gene Name:	MIF4G domain containing
Database Link:	NP_065730 Entrez Gene 57409 Human A9UHW6
Background:	MIF4GD is a protein which contains an MIF4G domain. This gene encodes a protein which contains an MIF4G domain.
Synonyms:	AD023; MIFD; SLIP1
Note:	Immunogen Sequence Homology: Dog: 100%; Pig: 100%; Rat: 100%; Horse: 100%; Human: 100%; Mouse: 100%; Bovine: 100%; Rabbit: 100%; Zebrafish: 100%; Guinea pig: 100%

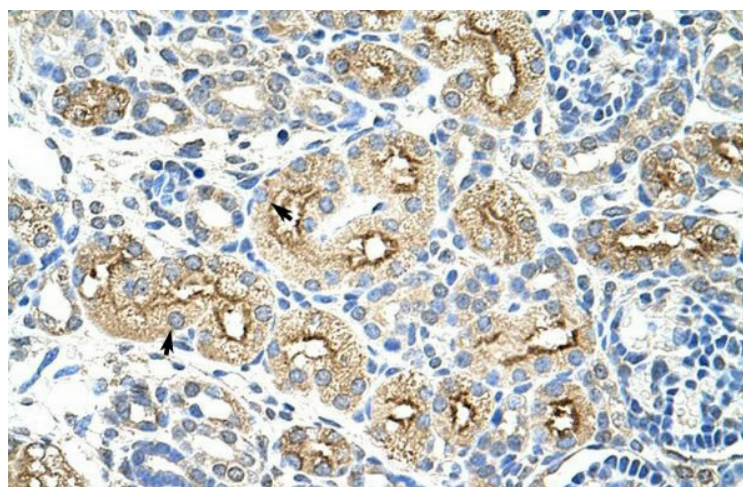


[View online »](#)

Product images:



WB Suggested Anti-MIF4GD Antibody Titration: 1.25 ug/ml; Positive Control: HepG2 cell lysate



Rabbit Anti-MIF4GD Antibody; Paraffin Embedded Tissue: Human Kidney; Cellular Data: Epithelial cells of renal tubule; Antibody Concentration: 4.0-8.0 ug/ml; Magnification: 400X