

Product datasheet for **TA343897**

PCBP3 Rabbit Polyclonal Antibody

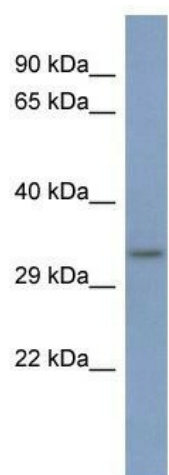
Product data:

Product Type:	Primary Antibodies
Applications:	WB
Recommended Dilution:	WB
Reactivity:	Human
Host:	Rabbit
Isotype:	IgG
Clonality:	Polyclonal
Immunogen:	The immunogen for anti-PCBP3 antibody: synthetic peptide directed towards the middle region of human PCBP3. Synthetic peptide located within the following region: QTPFPPLGQTNPAFPGEKLP LHSSEEAQNLMGQSSGLDASPPASTHELTI
Formulation:	Liquid. Purified antibody supplied in 1x PBS buffer with 0.09% (w/v) sodium azide and 2% sucrose. <i>Note that this product is shipped as lyophilized powder to China customers.</i>
Purification:	Affinity Purified
Conjugation:	Unconjugated
Storage:	Store at -20°C as received.
Stability:	Stable for 12 months from date of receipt.
Predicted Protein Size:	36 kDa
Gene Name:	poly(rC) binding protein 3
Database Link:	NP_065389 Entrez Gene 54039 Human P57721
Background:	This gene encodes a member of the KH-domain protein subfamily. Proteins of this subfamily, also referred to as alpha-CPs, bind to RNA with a specificity for C-rich pyrimidine regions. Alpha-CPs play important roles in post-transcriptional activities and h
Synonyms:	ALPHA-CP3
Note:	Immunogen Sequence Homology: Dog: 100%; Pig: 100%; Rat: 100%; Horse: 100%; Human: 100%; Mouse: 100%; Bovine: 100%; Rabbit: 100%; Zebrafish: 100%; Guinea pig: 100%



[View online »](#)

Product images:



WB Suggested Anti-PCBP3 Antibody Titration: 0.2-1 ug/ml; ELISA Titer: 1: 312500; Positive Control: HT1080 cell lysate