

Product datasheet for **TA343893**

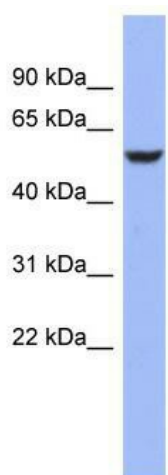
BRUNOL4 (CELF4) Rabbit Polyclonal Antibody

Product data:

Product Type:	Primary Antibodies
Applications:	WB
Recommended Dilution:	WB
Reactivity:	Human
Host:	Rabbit
Isotype:	IgG
Clonality:	Polyclonal
Immunogen:	The immunogen for anti-BRUNOL4 antibody: synthetic peptide directed towards the middle region of human BRUNOL4. Synthetic peptide located within the following region: PMAAFAAAQMQQMAALNMNGLAAAPMTPTSGGSTPPGITAPAVPSIPSI
Formulation:	Liquid. Purified antibody supplied in 1x PBS buffer with 0.09% (w/v) sodium azide and 2% sucrose.
Purification:	Affinity Purified
Conjugation:	Unconjugated
Storage:	Store at -20°C as received.
Stability:	Stable for 12 months from date of receipt.
Predicted Protein Size:	52 kDa
Gene Name:	CUGBP, Elav-like family member 4
Database Link:	NP_064565 Entrez Gene 56853 Human Q9BZC1
Background:	Members of the CELF/BRUNOL protein family contain two N-terminal RNA recognition motif (RRM) domains, one C-terminal RRM domain, and a divergent segment of 160-230 aa between the second and third RRM domains. Members of this protein family regulate pre-mR
Synonyms:	BRUNOL-4; BRUNOL4
Note:	Immunogen Sequence Homology: Pig: 100%; Rat: 100%; Horse: 100%; Human: 100%; Mouse: 100%; Bovine: 100%; Rabbit: 100%; Zebrafish: 100%



[View online »](#)

Product images:


WB Suggested Anti-BRUNOL4 Antibody Titration:
 0.2-1 ug/ml; ELISA Titer: 1: 312500; Positive
 Control: OVCAR-3 cell lysate