

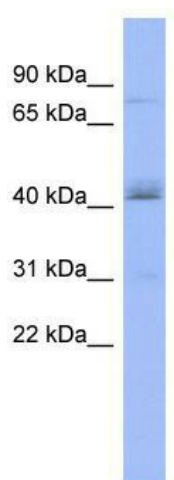
## Product datasheet for TA343892

### PAPOLB Rabbit Polyclonal Antibody

#### Product data:

Product Type:	Primary Antibodies
Applications:	WB
Recommended Dilution:	WB
Reactivity:	Human
Host:	Rabbit
Isotype:	IgG
Clonality:	Polyclonal
Immunogen:	The immunogen for anti-PAPOLB antibody: synthetic peptide directed towards the middle region of human PAPOLB. Synthetic peptide located within the following region: MEEFRTMWVIGLGLKKPDNSEILSIDLTYDIQSFTDTVYRQAVNSKMFEM
Formulation:	Liquid. Purified antibody supplied in 1x PBS buffer with 0.09% (w/v) sodium azide and 2% sucrose.
Purification:	Affinity Purified
Conjugation:	Unconjugated
Storage:	Store at -20°C as received.
Stability:	Stable for 12 months from date of receipt.
Predicted Protein Size:	72 kDa
Gene Name:	poly(A) polymerase beta
Database Link:	<a href="#">NP_064529</a> <a href="#">Entrez Gene 56903 Human</a> <a href="#">Q9NRJ5</a>
Background:	The function of this protein remains unknown.
Synonyms:	PAPT; TPAP
Note:	Immunogen Sequence Homology: Human: 100%; Rat: 93%; Mouse: 93%; Rabbit: 93%; Pig: 79%; Guinea pig: 79%
Protein Pathways:	RNA degradation


[View online »](#)

**Product images:**

WB Suggested Anti-PAPOLB Antibody Titration:  
0.2-1 ug/ml; ELISA Titer: 1: 312500; Positive  
Control: COLO205 cell lysate