

Product datasheet for **TA343890**

EXOSC4 Rabbit Polyclonal Antibody

Product data:

Product Type:	Primary Antibodies
Applications:	IHC, WB
Recommended Dilution:	WB, IHC
Reactivity:	Human
Host:	Rabbit
Isotype:	IgG
Clonality:	Polyclonal
Immunogen:	The immunogen for anti-EXOSC4 antibody: synthetic peptide directed towards the N terminal of human EXOSC4. Synthetic peptide located within the following region: SDQGYRVDGRRAGELRKIQARMGVFAQADGSAYIEQGNTKALAVVYGPHE
Formulation:	Liquid. Purified antibody supplied in 1x PBS buffer with 0.09% (w/v) sodium azide and 2% sucrose. <i>Note that this product is shipped as lyophilized powder to China customers.</i>
Purification:	Protein A purified
Conjugation:	Unconjugated
Storage:	Store at -20°C as received.
Stability:	Stable for 12 months from date of receipt.
Predicted Protein Size:	27 kDa
Gene Name:	exosome component 4
Database Link:	NP_061910 Entrez Gene 54512 Human Q9NPD3
Background:	EXOSC4 belongs to the RNase PH family. It is a component of the exosome 3'→5' exoribonuclease complex and is required for the 3' processing of the 7S pre-RNA to the mature 5.8S rRNA. It has a 3'-5' exonuclease activity.
Synonyms:	hRrp41p; p12A; RRP41; RRP41A; Rrp41p; SKI6; Ski6p

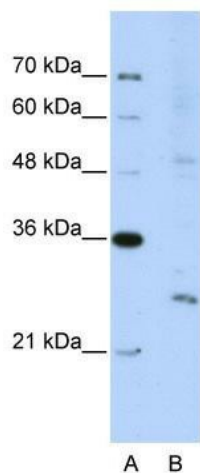


[View online »](#)

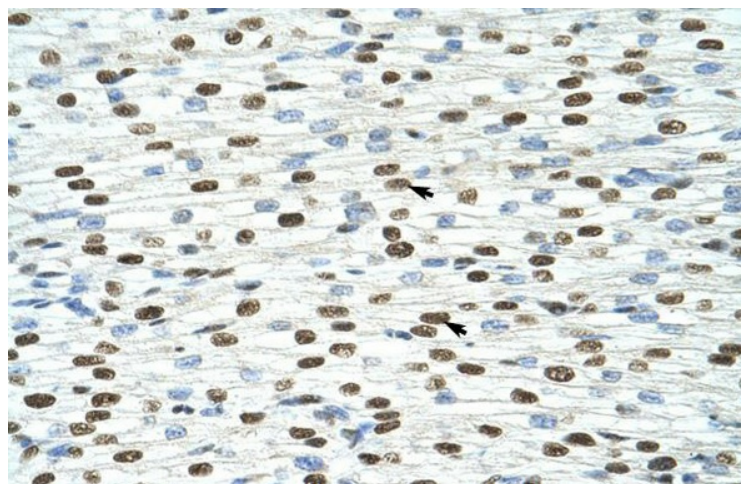
Note: Immunogen Sequence Homology: Dog: 100%; Pig: 100%; Rat: 100%; Horse: 100%; Human: 100%; Mouse: 100%; Bovine: 100%; Rabbit: 100%; Guinea pig: 100%; Zebrafish: 93%; Yeast: 92%

Protein Pathways: RNA degradation

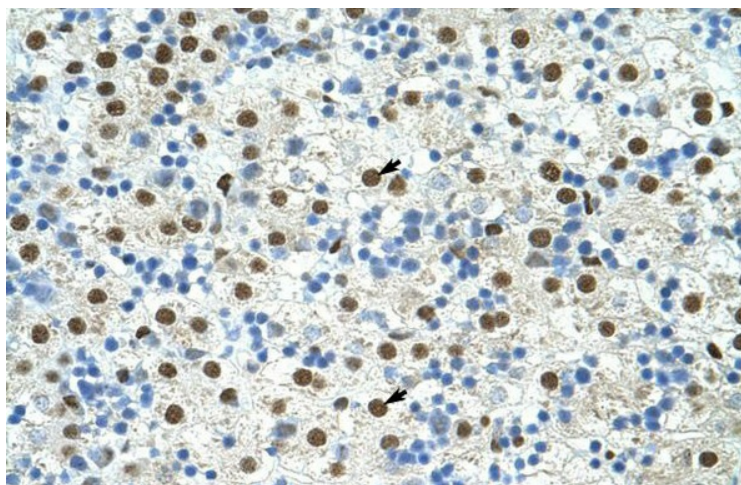
Product images:



WB Suggested Anti-EXOSC4 Antibody Titration: 5.0 ug/ml; Positive Control: Jurkat cell lysate



Rabbit Anti-EXOSC4 Antibody; Paraffin Embedded Tissue: Human Heart; Cellular Data: Myocardial cells; Antibody Concentration: 4.0-8.0 ug/ml; Magnification: 400X



Rabbit Anti-EXOSC4 Antibody; Paraffin Embedded Tissue: Human Liver; Cellular Data: Hepatocytes; Antibody Concentration: 4.0-8.0 ug/ml; Magnification: 400X