

Product datasheet for **TA343889**

RBM47 Rabbit Polyclonal Antibody

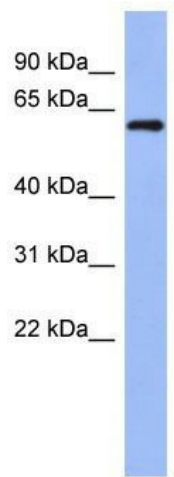
Product data:

Product Type:	Primary Antibodies
Applications:	IHC, WB
Recommended Dilution:	WB
Reactivity:	Human
Host:	Rabbit
Isotype:	IgG
Clonality:	Polyclonal
Immunogen:	The immunogen for anti-RBM47 antibody: synthetic peptide directed towards the middle region of human RBM47. Synthetic peptide located within the following region: HFTSREDAVHAMNNLNGTELEGSCLEVTLAKPVDKEQYSRYQKAARGGGA
Formulation:	Liquid. Purified antibody supplied in 1x PBS buffer with 0.09% (w/v) sodium azide and 2% sucrose. <i>Note that this product is shipped as lyophilized powder to China customers.</i>
Purification:	Affinity Purified
Conjugation:	Unconjugated
Storage:	Store at -20°C as received.
Stability:	Stable for 12 months from date of receipt.
Predicted Protein Size:	57 kDa
Gene Name:	RNA binding motif protein 47
Database Link:	NP_061900 Entrez Gene 54502 Human A0AV96
Background:	The function of this protein remains unknown.
Synonyms:	NET18
Note:	Immunogen Sequence Homology: Dog: 100%; Pig: 100%; Rat: 100%; Horse: 100%; Human: 100%; Mouse: 100%; Bovine: 100%; Rabbit: 100%; Guinea pig: 100%; Zebrafish: 93%



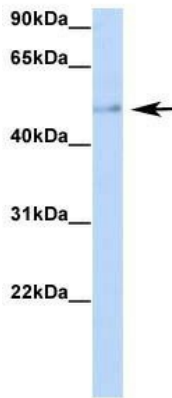
[View online »](#)

Product images:



WB Suggested Anti-RBM47 Antibody Titration:
0.2-1 ug/ml ELISA Titer: 1: 62500 Positive Control:
NCI-H226

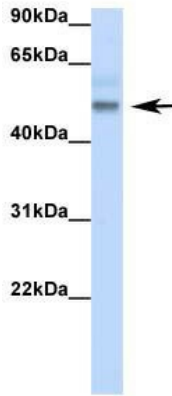
RBM47



Rabbit Anti-RBM47
Lane: Human Fetal Heart
Antibody Titration: 1.0 µg/mL
Gel Concentration: 12%

Host: Rabbit; Target Name: RBM47; Sample
Tissue: Human Fetal Heart; Antibody Dilution: 1.0
ug/ml

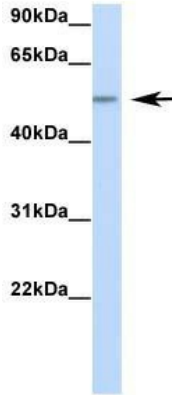
RBM47



Rabbit Anti-RBM47
Lane: Human Fetal Lung
Antibody Titration: 1.0 µg/mL
Gel Concentration: 12%

Host: Rabbit; Target Name: RBM47; Sample Tissue: Human Fetal Lung; Antibody Dilution: 1.0 ug/ml

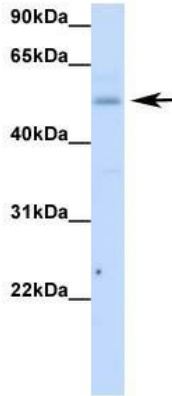
RBM47



Rabbit Anti-RBM47
Lane: Human Fetal Liver
Antibody Titration: 1.0 µg/mL
Gel Concentration: 12%

Host: Rabbit; Target Name: RBM47; Sample Tissue: Human Fetal Liver; Antibody Dilution: 1.0 ug/ml

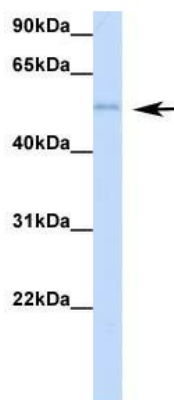
RBM47



Rabbit Anti-RBM47
Lane: Human Fetal Muscle
Antibody Titration: 1.0 µg/mL
Gel Concentration: 12%

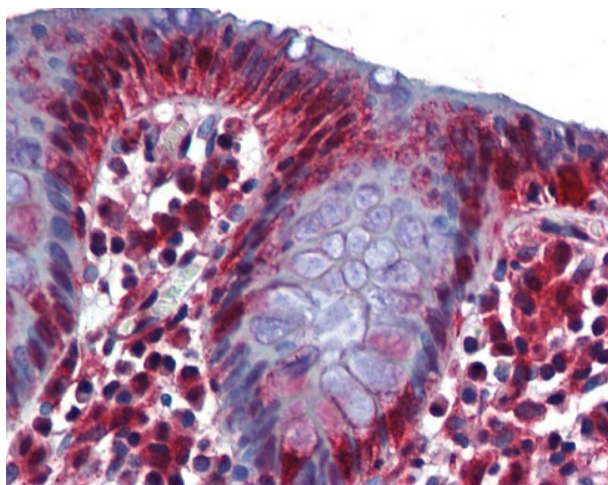
Host: Rabbit; Target Name: RBM47; Sample Tissue: Human Fetal Muscle; Antibody Dilution: 1.0 ug/ml

RBM47



Rabbit Anti-RBM47
Lane: Human Adult Placenta
Antibody Titration: 1.0 µg/mL
Gel Concentration: 12%

Host: Rabbit; Target Name: RBM47; Sample
Tissue: Human Adult Placenta; Antibody Dilution:
1.0 ug/ml



human Colon