

Product datasheet for **TA343888**

XRN1 Rabbit Polyclonal Antibody

Product data:

Product Type:	Primary Antibodies
Applications:	WB
Recommended Dilution:	WB
Reactivity:	Human
Host:	Rabbit
Isotype:	IgG
Clonality:	Polyclonal
Immunogen:	The immunogen for anti-XRN1 antibody: synthetic peptide directed towards the middle region of human XRN1. Synthetic peptide located within the following region: LPQEISQVNQHHSKSGFNDNSVKYQQRKHDPHRKFKEECKSPKAECWSQKM
Formulation:	Liquid. Purified antibody supplied in 1x PBS buffer with 0.09% (w/v) sodium azide and 2% sucrose. <i>Note that this product is shipped as lyophilized powder to China customers.</i>
Purification:	Affinity Purified
Conjugation:	Unconjugated
Storage:	Store at -20°C as received.
Stability:	Stable for 12 months from date of receipt.
Predicted Protein Size:	194 kDa
Gene Name:	5'-3' exoribonuclease 1
Database Link:	NP_061874 Entrez Gene 54464 Human Q8IZH2



[View online »](#)

Background:

SEP1 (XRN1) localizes to cytoplasmic foci containing a complex of mRNA-degrading enzymes. In addition to mRNA metabolism, yeast Sep1 has been implicated in a variety of nuclear and cytoplasmic functions, including homologous recombination, meiosis, telomere maintenance, and microtubule assembly. SEP1 localizes to cytoplasmic foci containing a complex of mRNA-degrading enzymes. In addition to mRNA metabolism, yeast Sep1 has been implicated in a variety of nuclear and cytoplasmic functions, including homologous recombination, meiosis, telomere maintenance, and microtubule assembly. [supplied by OMIM].

PRIMARYREFSEQ_SPAN PRIMARY_IDENTIFIER PRIMARY_SPAN COMP 1-67 BX640905.1 1-67 68-5188 AY137776.1 1-5121 5189-5269 BG197321.1 308-388 5270-10092 AC023508.16 31718-36540 c

Synonyms:

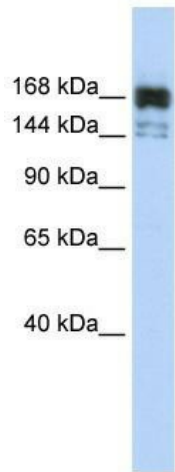
SEP1

Note:

Immunogen Sequence Homology: Rat: 100%; Human: 100%; Rabbit: 100%; Dog: 93%; Bovine: 92%; Horse: 90%; Yeast: 90%; Mouse: 86%; Pig: 85%; Guinea pig: 79%

Protein Pathways:

RNA degradation

Product images:

WB Suggested Anti-XRN1 Antibody Titration: 0.2-1 ug/ml; ELISA Titer: 1: 1562500; Positive Control: MCF7 cell lysate