

Product datasheet for **TA343881**

Rbfox1 Rabbit Polyclonal Antibody

Product data:

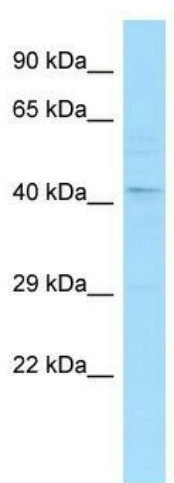
| | |
|-------------------------|--|
| Product Type: | Primary Antibodies |
| Applications: | WB |
| Recommended Dilution: | WB |
| Reactivity: | Mouse |
| Host: | Rabbit |
| Isotype: | IgG |
| Clonality: | Polyclonal |
| Immunogen: | The immunogen for Anti-Rbfox1 antibody is: synthetic peptide directed towards the N-terminal region of Mouse Rbfox1. Synthetic peptide located within the following region: EYTGQTTVPDHTLNLYPPTQTHSEQSADTSAQTVSGTATQTDDAAPT DGQ |
| Formulation: | Liquid. Purified antibody supplied in 1x PBS buffer with 0.09% (w/v) sodium azide and 2% sucrose. <i>Note that this product is shipped as lyophilized powder to China customers.</i> |
| Purification: | Affinity Purified |
| Conjugation: | Unconjugated |
| Storage: | Store at -20°C as received. |
| Stability: | Stable for 12 months from date of receipt. |
| Predicted Protein Size: | 43 kDa |
| Gene Name: | RNA binding protein, fox-1 homolog (C. elegans) 1 |
| Database Link: | NP_067452 Entrez Gene 268859 Mouse Q9JJ43 |
| Background: | Rbfox1 is a RNA-binding protein that regulates alternative splicing events by binding to 5'-UGCAUGU-3' elements. It prevents binding of U2AF2 to the 3'-splice site and regulates alternative splicing of tissue-specific exons and of differentially spliced exons during erythropoiesis. |
| Synonyms: | 2BP1; A2BP1; FOX-1; FOX1; HRNBP1 |



[View online »](#)

Note: Immunogen Sequence Homology: Human: 100%; Dog: 93%; Rat: 93%; Mouse: 93%; Pig: 86%; Horse: 86%; Guinea pig: 86%; Bovine: 79%

Product images:



Host: Rabbit; Target Name: Rbfox1; Sample
Tissue: Mouse Testis lysates; Antibody Dilution:
1.0 ug/ml