

Product datasheet for **TA343879**

TMEM63B Rabbit Polyclonal Antibody

Product data:

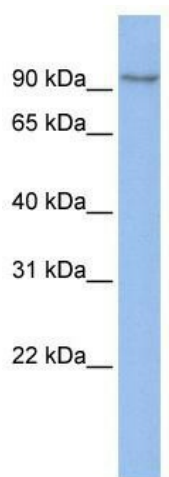
Product Type:	Primary Antibodies
Applications:	WB
Recommended Dilution:	WB
Reactivity:	Human
Host:	Rabbit
Isotype:	IgG
Clonality:	Polyclonal
Immunogen:	The immunogen for anti-TMEM63B antibody: synthetic peptide directed towards the middle region of human TMEM63B. Synthetic peptide located within the following region: VRGCEQVEAIEYYTKLEQKLKEDYKREKEKVNEKPLGMAFVTFHNETITA
Formulation:	Liquid. Purified antibody supplied in 1x PBS buffer with 0.09% (w/v) sodium azide and 2% sucrose. <i>Note that this product is shipped as lyophilized powder to China customers.</i>
Purification:	Affinity Purified
Conjugation:	Unconjugated
Storage:	Store at -20°C as received.
Stability:	Stable for 12 months from date of receipt.
Predicted Protein Size:	95 kDa
Gene Name:	transmembrane protein 63B
Database Link:	NP_060896 Entrez Gene 55362 Human Q5T3F8
Background:	TMEM63B belongs to the SPO75/TMEM63 family. It is a multi-pass membrane protein. The function of TMEM63B remains unknown.
Synonyms:	C6orf110
Note:	Immunogen Sequence Homology: Dog: 100%; Pig: 100%; Rat: 100%; Goat: 100%; Horse: 100%; Human: 100%; Bovine: 100%; Rabbit: 100%; Guinea pig: 100%; Mouse: 93%



[View online »](#)

Protein Families: Transmembrane

Product images:



WB Suggested Anti-TMEM63B Antibody Titration:
0.2-1 ug/ml; ELISA Titer: 1: 1562500; Positive
Control: 293T cell lysate