

Product datasheet for **TA343877**

LARP6 Rabbit Polyclonal Antibody

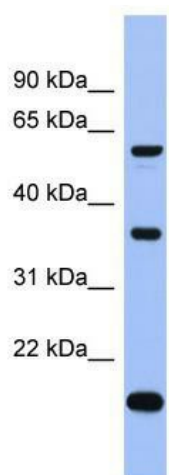
Product data:

Product Type:	Primary Antibodies
Applications:	WB
Recommended Dilution:	WB
Reactivity:	Human, Mouse
Host:	Rabbit
Isotype:	IgG
Clonality:	Polyclonal
Immunogen:	The immunogen for anti-LARP6 antibody: synthetic peptide directed towards the middle region of human LARP6. Synthetic peptide located within the following region: MGTQEKSPGTSPLLSRKMQTADGLPVGVLRLPRGPDNTRGFHGHRSRAC
Formulation:	Liquid. Purified antibody supplied in 1x PBS buffer with 0.09% (w/v) sodium azide and 2% sucrose. <i>Note that this product is shipped as lyophilized powder to China customers.</i>
Purification:	Affinity Purified
Conjugation:	Unconjugated
Storage:	Store at -20°C as received.
Stability:	Stable for 12 months from date of receipt.
Predicted Protein Size:	55 kDa
Gene Name:	La ribonucleoprotein domain family member 6
Database Link:	NP_060827 Entrez Gene 67557 Mouse Entrez Gene 55323 Human Q9BRS8
Background:	The function of this protein remains unknown.
Synonyms:	ACHN
Note:	Immunogen Sequence Homology: Human: 100%; Dog: 93%; Pig: 93%; Horse: 93%; Mouse: 93%; Bovine: 93%; Guinea pig: 93%; Rat: 86%



[View online »](#)

Product images:



WB Suggested Anti-LARP6 Antibody Titration: 0.2-1 ug/ml; ELISA Titer: 1: 1562500; Positive Control: ACHN cell lysate