

## Product datasheet for **TA343876**

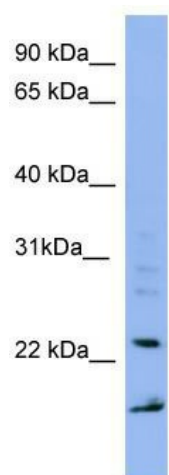
### IMP3 Rabbit Polyclonal Antibody

#### Product data:

Product Type:	Primary Antibodies
Applications:	WB
Recommended Dilution:	WB
Reactivity:	Human
Host:	Rabbit
Isotype:	IgG
Clonality:	Polyclonal
Immunogen:	The immunogen for anti-IMP3 antibody: synthetic peptide directed towards the middle region of human IMP3. Synthetic peptide located within the following region: GHVRVGPDVVTDPAFLVTRSMEDFVTWVDSSKIKRHVLEYNEERDDFDLE
Formulation:	Liquid. Purified antibody supplied in 1x PBS buffer with 0.09% (w/v) sodium azide and 2% sucrose. <i>Note that this product is shipped as lyophilized powder to China customers.</i>
Purification:	Affinity Purified
Conjugation:	Unconjugated
Storage:	Store at -20°C as received.
Stability:	Stable for 12 months from date of receipt.
Predicted Protein Size:	22 kDa
Gene Name:	IMP3, U3 small nucleolar ribonucleoprotein
Database Link:	<a href="#">NP_060755</a> <a href="#">Entrez Gene 55272 Human</a> <a href="#">Q9NV31</a>
Background:	This gene encodes the human homolog of the yeast Imp3 protein. The protein localizes to the nucleoli and interacts with the U3 snoRNP complex. The protein contains an S4 domain.
Synonyms:	BRMS2; C15orf12; MRPS4
Note:	Immunogen Sequence Homology: Dog: 100%; Pig: 100%; Rat: 100%; Human: 100%; Mouse: 100%; Bovine: 100%; Rabbit: 100%; Guinea pig: 100%; Zebrafish: 79%



[View online »](#)

**Product images:**

WB Suggested Anti-IMP3 Antibody Titration: 0.2-1 ug/ml; ELISA Titer: 1: 1562500; Positive Control: HepG2 cell lysate. IMP3 is supported by BioGPS gene expression data to be expressed in HepG2