

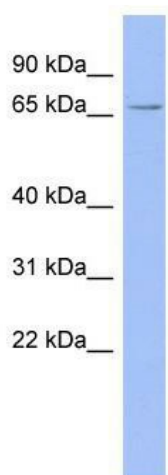
## Product datasheet for **TA343875**

### RAVER2 Rabbit Polyclonal Antibody

#### Product data:

Product Type:	Primary Antibodies
Applications:	WB
Recommended Dilution:	WB
Reactivity:	Human
Host:	Rabbit
Isotype:	IgG
Clonality:	Polyclonal
Immunogen:	The immunogen for anti-RAVER2 antibody: synthetic peptide directed towards the middle region of human RAVR2. Synthetic peptide located within the following region: TITAGMGMLPFFPNQHIAGQAGPGHSNTQEKQPATVGMAEGNFSGSQPYL
Formulation:	Liquid. Purified antibody supplied in 1x PBS buffer with 0.09% (w/v) sodium azide and 2% sucrose.
Purification:	Affinity Purified
Conjugation:	Unconjugated
Storage:	Store at -20°C as received.
Stability:	Stable for 12 months from date of receipt.
Predicted Protein Size:	73 kDa
Gene Name:	ribonucleoprotein, PTB binding 2
Database Link:	<a href="#">NP_060681</a> <a href="#">Entrez Gene 55225 Human</a> <a href="#">Q9HCJ3</a>
Background:	RAVER2 may bind single stranded nucleic acids.
Synonyms:	DKFZp762D1011; FLJ10770; KIAA1579
Note:	Immunogen Sequence Homology: Human: 100%; Rabbit: 92%; Bovine: 86%; Mouse: 79%

[View online »](#)

**Product images:**

WB Suggested Anti-RAVER2 Antibody Titration:  
0.2-1 ug/ml; ELISA Titer: 1: 62500; Positive  
Control: HT1080 cell lysate