

## Product datasheet for **TA343873**

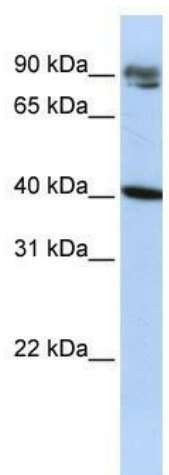
### KLHDC8A Rabbit Polyclonal Antibody

#### Product data:

Product Type:	Primary Antibodies
Applications:	WB
Recommended Dilution:	WB
Reactivity:	Human
Host:	Rabbit
Isotype:	IgG
Clonality:	Polyclonal
Immunogen:	The immunogen for anti-KLHDC8A antibody: synthetic peptide directed towards the middle region of human KLHDC8A. Synthetic peptide located within the following region: NQPTVLETAEAFHPGKNKWEILPAMPTPRCACSSIVVKNCLLAVGGVNQG
Formulation:	Liquid. Purified antibody supplied in 1x PBS buffer with 0.09% (w/v) sodium azide and 2% sucrose.
Purification:	Affinity Purified
Conjugation:	Unconjugated
Storage:	Store at -20°C as received.
Stability:	Stable for 12 months from date of receipt.
Predicted Protein Size:	39 kDa
Gene Name:	kelch domain containing 8A
Database Link:	<a href="#">NP_060673</a> <a href="#">Entrez Gene 55220 Human</a> <a href="#">Q8IYD2</a>
Background:	The function remains unknown.
Synonyms:	FLJ10748
Note:	Immunogen Sequence Homology: Dog: 100%; Pig: 100%; Rat: 100%; Human: 100%; Bovine: 100%; Rabbit: 100%; Guinea pig: 100%; Horse: 93%; Mouse: 93%



[View online »](#)

**Product images:**

WB Suggested Anti-KLHDC8A Antibody Titration:  
0.2-1 ug/ml; ELISA Titer: 1: 1562500; Positive  
Control: HepG2 cell lysate