

Product datasheet for **TA343871**

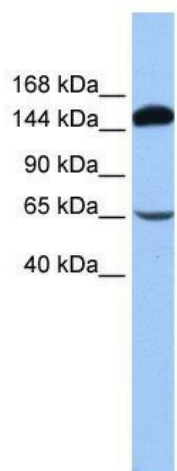
SRBD1 Rabbit Polyclonal Antibody

Product data:

Product Type:	Primary Antibodies
Applications:	WB
Recommended Dilution:	WB
Reactivity:	Human
Host:	Rabbit
Isotype:	IgG
Clonality:	Polyclonal
Immunogen:	The immunogen for anti-SRBD1 antibody: synthetic peptide directed towards the N terminal of human SRBD1. Synthetic peptide located within the following region: MSSLPRRAKVQVQDVVLKDEFSSFSELSSASEEDDKEDSAWEPQKKVPRS
Formulation:	Liquid. Purified antibody supplied in 1x PBS buffer with 0.09% (w/v) sodium azide and 2% sucrose.
Purification:	Affinity Purified
Conjugation:	Unconjugated
Storage:	Store at -20°C as received.
Stability:	Stable for 12 months from date of receipt.
Predicted Protein Size:	112 kDa
Gene Name:	S1 RNA binding domain 1
Database Link:	NP_060549 Entrez Gene 55133 Human Q8N5C6
Background:	SRBD1 contains 1 S1 motif domain. The exact function of SRBD1 remains unknown.
Synonyms:	FLJ10379
Note:	Immunogen Sequence Homology: Dog: 100%; Rat: 100%; Horse: 100%; Human: 100%; Rabbit: 100%; Pig: 93%; Bovine: 93%; Mouse: 86%; Zebrafish: 80%; Yeast: 79%



[View online »](#)

Product images:

WB Suggested Anti-SRBD1 Antibody Titration: 0.2-1 ug/ml; Positive Control: 721_B cell lysate; SRBD1 is supported by BioGPS gene expression data to be expressed in 721_B