

## Product datasheet for **TA343870**

### SRBD1 Rabbit Polyclonal Antibody

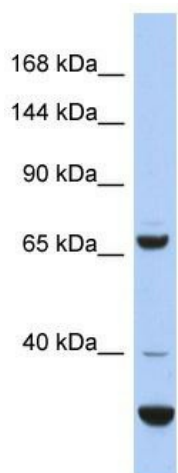
#### Product data:

Product Type:	Primary Antibodies
Applications:	WB
Recommended Dilution:	WB
Reactivity:	Human
Host:	Rabbit
Isotype:	IgG
Clonality:	Polyclonal
Immunogen:	The immunogen for Anti-SRBD1 antibody is: synthetic peptide directed towards the C-terminal region of Human SRBD1. Synthetic peptide located within the following region: SADVEVTNEKQGKKKSKTAVNVLLKPNPLDQTCIHPESYDIAMRFLSSIG
Formulation:	Liquid. Purified antibody supplied in 1x PBS buffer with 0.09% (w/v) sodium azide and 2% sucrose.
Purification:	Affinity Purified
Conjugation:	Unconjugated
Storage:	Store at -20°C as received.
Stability:	Stable for 12 months from date of receipt.
Predicted Protein Size:	68 kDa
Gene Name:	S1 RNA binding domain 1
Database Link:	<a href="#">NP_060549</a> <a href="#">Entrez Gene 55133 Human</a> <a href="#">Q8N5C6</a>
Background:	SRBD1 contains 1 S1 motif domain. The exact function of SRBD1 remains unknown.
Synonyms:	FLJ10379
Note:	Immunogen Sequence Homology: Pig: 100%; Horse: 100%; Human: 100%; Rabbit: 100%; Guinea pig: 100%; Dog: 93%; Bovine: 93%; Mouse: 83%; Rat: 79%



[View online »](#)

## Product images:



Host: Rabbit  
Target Name: SRBD1  
Sample Tissue: COLO205 Cell Lysate  
Antibody Dilution: 1.0 $\mu$ g/ml

Host: Rabbit; Target Name: SRBD1; Sample Tissue: COLO205 Whole Cell lysates; Antibody Dilution: 1.0 ug/ml; SRBD1 is supported by BioGPS gene expression data to be expressed in COLO205