

## Product datasheet for **TA343869**

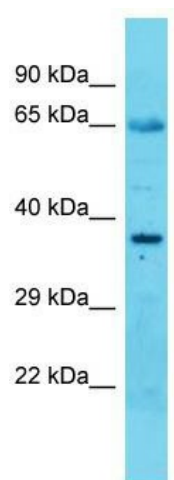
### **RBM28 Rabbit Polyclonal Antibody**

#### **Product data:**

Product Type:	Primary Antibodies
Applications:	WB
Recommended Dilution:	WB
Reactivity:	Mouse
Host:	Rabbit
Isotype:	IgG
Clonality:	Polyclonal
Immunogen:	The immunogen for Anti-Rbm28 antibody is: synthetic peptide directed towards the C-terminal region of Mouse Rbm28. Synthetic peptide located within the following region: QKKQQLASSVQAPKRKAKENKAEARFNQLVEQYKQKLLGPSKGAPLMKRS
Formulation:	Liquid. Purified antibody supplied in 1x PBS buffer with 0.09% (w/v) sodium azide and 2% sucrose.
Purification:	Affinity Purified
Conjugation:	Unconjugated
Storage:	Store at -20°C as received.
Stability:	Stable for 12 months from date of receipt.
Predicted Protein Size:	65 kDa
Gene Name:	RNA binding motif protein 28
Database Link:	<a href="#">NP_060547</a> <a href="#">Entrez Gene 68272 Mouse</a> <a href="#">Q9NW13</a>
Background:	Rbm28 is a nucleolar component of the spliceosomal ribonucleoprotein complexes.
Synonyms:	ANES
Note:	Immunogen Sequence Homology: Human: 93%; Dog: 86%; Horse: 86%; Mouse: 86%; Bovine: 86%; Pig: 79%; Guinea pig: 79%



[View online »](#)

**Product images:**


Host: Rabbit; Target Name: Rbm28; Sample  
Tissue: Mouse Heart lysates; Antibody Dilution:  
1.0 ug/ml