

## Product datasheet for **TA343868**

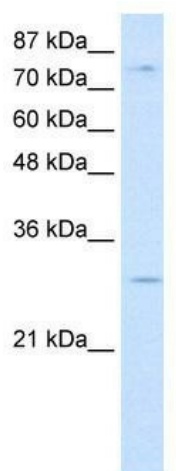
### **RBM28 Rabbit Polyclonal Antibody**

#### **Product data:**

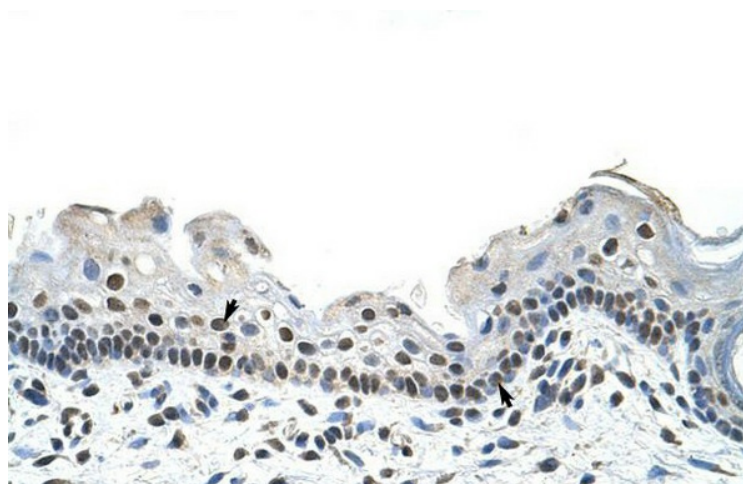
<b>Product Type:</b>	Primary Antibodies
<b>Applications:</b>	IHC, WB
<b>Recommended Dilution:</b>	WB, IHC
<b>Reactivity:</b>	Human
<b>Host:</b>	Rabbit
<b>Isotype:</b>	IgG
<b>Clonality:</b>	Polyclonal
<b>Immunogen:</b>	The immunogen for anti-RBM28 antibody: synthetic peptide directed towards the C terminal of human RBM28. Synthetic peptide located within the following region: QTKAEVEQVELPDGKKRRKVLALPSHRGPKIRLRDKGKVKPVHPKPKPQ
<b>Formulation:</b>	Liquid. Purified antibody supplied in 1x PBS buffer with 0.09% (w/v) sodium azide and 2% sucrose. <i>Note that this product is shipped as lyophilized powder to China customers.</i>
<b>Purification:</b>	Affinity Purified
<b>Conjugation:</b>	Unconjugated
<b>Storage:</b>	Store at -20°C as received.
<b>Stability:</b>	Stable for 12 months from date of receipt.
<b>Predicted Protein Size:</b>	83 kDa
<b>Gene Name:</b>	RNA binding motif protein 28
<b>Database Link:</b>	<a href="#">NP_060547</a> <a href="#">Entrez Gene 55131 Human</a> <a href="#">Q9NW13</a>
<b>Background:</b>	RBM28 protein may be a specific nucleolar component of the spliceosomal snRNPs.
<b>Synonyms:</b>	ANES
<b>Note:</b>	Immunogen Sequence Homology: Dog: 100%; Pig: 100%; Rat: 100%; Horse: 100%; Human: 100%; Mouse: 100%; Rabbit: 100%; Guinea pig: 100%; Bovine: 93%; Zebrafish: 85%



[View online »](#)

**Product images:**

WB Suggested Anti-RBM28 Antibody Titration:  
0.2-1 ug/ml; Positive Control: HepG2 cell lysate



Rabbit Anti-RBM28 Antibody; Paraffin Embedded  
Tissue: Human Skin; Cellular Data: Squamous  
epithelial cells; Antibody Concentration: 4.0-8.0  
ug/ml; Magnification: 400X



Rabbit Anti-RBM28 Antibody; Paraffin Embedded Tissue: Human Heart; Cellular Data: Myocardial cells; Antibody Concentration: 4.0-8.0 ug/ml; Magnification: 400X