

Product datasheet for **TA343867**

RBM22 Rabbit Polyclonal Antibody

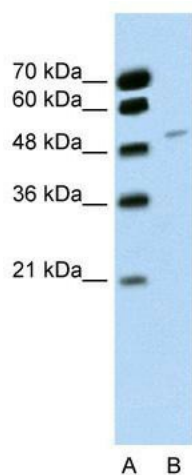
Product data:

Product Type:	Primary Antibodies
Applications:	IHC, WB
Recommended Dilution:	WB, IHC
Reactivity:	Human
Host:	Rabbit
Isotype:	IgG
Clonality:	Polyclonal
Immunogen:	The immunogen for anti-RBM22 antibody: synthetic peptide directed towards the C terminal of human RBM22. Synthetic peptide located within the following region: KWGRSQAARGKEKEKDGTTDSGIKLEPVPGLPGALPPPPAAEEEEASANYF
Formulation:	Liquid. Purified antibody supplied in 1x PBS buffer with 0.09% (w/v) sodium azide and 2% sucrose. <i>Note that this product is shipped as lyophilized powder to China customers.</i>
Purification:	Affinity Purified
Conjugation:	Unconjugated
Storage:	Store at -20°C as received.
Stability:	Stable for 12 months from date of receipt.
Predicted Protein Size:	46 kDa
Gene Name:	RNA binding motif protein 22
Database Link:	NP_060517 Entrez Gene 55696 Human Q9NW64
Background:	RBM22 may be involved in pre-mRNA splicing.
Synonyms:	Cwc2; fSAP47; ZC3H16
Note:	Immunogen Sequence Homology: Dog: 100%; Pig: 100%; Rat: 100%; Human: 100%; Mouse: 100%; Bovine: 100%; Rabbit: 100%; Guinea pig: 100%; Horse: 93%
Protein Pathways:	Spliceosome



[View online »](#)

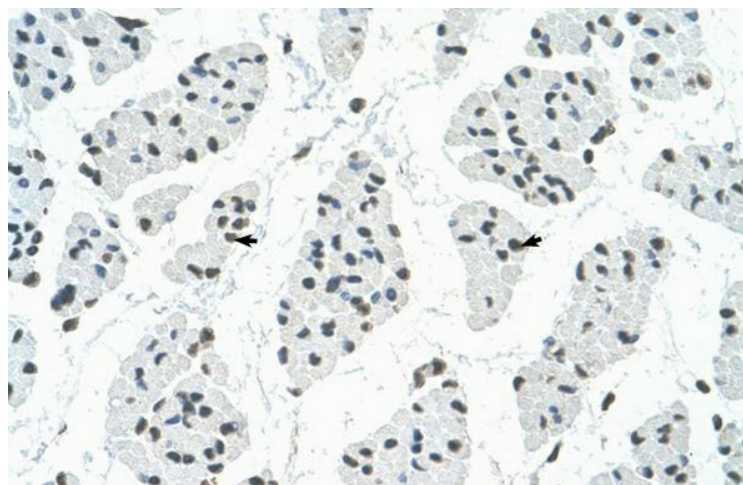
Product images:



WB Suggested Anti-RBM22 Antibody Titration:
0.2-1 ug/ml; Positive Control: Jurkat cell lysate



Rabbit Anti-RBM22 Antibody; Paraffin Embedded
Tissue: Human Heart; Cellular Data: Myocardial
cells; Antibody Concentration: 4.0-8.0 ug/ml;
Magnification: 400X



Rabbit Anti-RBM22 Antibody; Paraffin Embedded Tissue: Human Muscle; Cellular Data: Skeletal muscle cells; Antibody Concentration: 4.0-8.0 ug/ml; Magnification: 400X