

Product datasheet for **TA343864**

FAM174C Rabbit Polyclonal Antibody

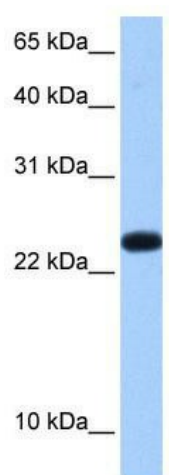
Product data:

Product Type:	Primary Antibodies
Applications:	WB
Recommended Dilution:	WB
Reactivity:	Human
Host:	Rabbit
Isotype:	IgG
Clonality:	Polyclonal
Immunogen:	The immunogen for anti-C19orf24 antibody: synthetic peptide directed towards the N terminal of human C19orf24. Synthetic peptide located within the following region: MREGQEMGPTPVPSNPLLHRSFPCWPRGWSHPVPTRELLLEPAQPADLLP
Formulation:	Liquid. Purified antibody supplied in 1x PBS buffer with 0.09% (w/v) sodium azide and 2% sucrose. <i>Note that this product is shipped as lyophilized powder to China customers.</i>
Purification:	Affinity Purified
Conjugation:	Unconjugated
Storage:	Store at -20°C as received.
Stability:	Stable for 12 months from date of receipt.
Predicted Protein Size:	14 kDa
Gene Name:	chromosome 19 open reading frame 24
Database Link:	NP_060384 Entrez Gene 55009 Human Q9BVV8
Background:	C19orf24 is a novel human non-classical secreted protein which is encoded by the hypothetical gene C19orf24 (chromosome 19 open reading frame 24). The exact function of C19orf24 remains unknown.
Synonyms:	FLJ20640
Note:	Immunogen Sequence Homology: Human: 100%



[View online »](#)

Product images:



WB Suggested Anti-C19orf24 Antibody Titration:
0.2-1 ug/ml; Positive Control: Human Placenta