

## Product datasheet for **TA343860**

### RG9MTD1 (TRMT10C) Rabbit Polyclonal Antibody

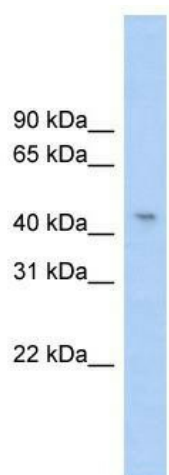
#### Product data:

Product Type:	Primary Antibodies
Applications:	WB
Recommended Dilution:	WB
Reactivity:	Human
Host:	Rabbit
Isotype:	IgG
Clonality:	Polyclonal
Immunogen:	The immunogen for anti-RG9MTD1 antibody: synthetic peptide directed towards the middle region of human RG9MTD1. Synthetic peptide located within the following region: MKRKELQNTVSQLESEGWNRRNVDPFHIFYFCNLKIDGALHRELVKRYQE
Formulation:	Liquid. Purified antibody supplied in 1x PBS buffer with 0.09% (w/v) sodium azide and 2% sucrose. <i>Note that this product is shipped as lyophilized powder to China customers.</i>
Purification:	Affinity Purified
Conjugation:	Unconjugated
Storage:	Store at -20°C as received.
Stability:	Stable for 12 months from date of receipt.
Predicted Protein Size:	47
Gene Name:	tRNA methyltransferase 10C, mitochondrial RNase P subunit
Database Link:	<a href="#">NP_060289</a> <a href="#">Entrez Gene 54931 Human Q7L0Y3</a>
Background:	RG9MTD1 functions in mitochondrial tRNA maturation. Part of mitochondrial ribonuclease P, an enzyme composed of MRPP1/RG9MTD1, MRPP2/HSD17B10 and MRPP3/KIAA0391, which cleaves tRNA molecules in their 5'-ends.
Synonyms:	COXPD30; HNYA; MRPP1; RG9MTD1
Note:	Immunogen Sequence Homology: Rat: 100%; Human: 100%; Mouse: 100%; Horse: 93%; Pig: 92%; Guinea pig: 92%; Bovine: 86%; Rabbit: 86%; Zebrafish: 85%; Dog: 79%



[View online »](#)

## Product images:



WB Suggested Anti-RG9MTD1 Antibody Titration:  
0.2-1 ug/ml; Positive Control: Hela cell lysate