

## Product datasheet for **TA343858**

### CDKN2AIP Rabbit Polyclonal Antibody

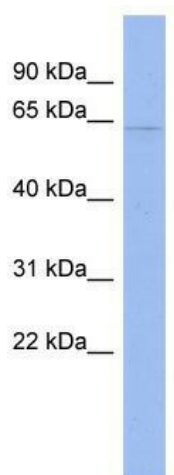
#### Product data:

Product Type:	Primary Antibodies
Applications:	WB
Recommended Dilution:	WB
Reactivity:	Human
Host:	Rabbit
Isotype:	IgG
Clonality:	Polyclonal
Immunogen:	The immunogen for anti-CDKN2AIP antibody: synthetic peptide directed towards the N terminal of human CDKN2AIP. Synthetic peptide located within the following region: RRDFLLRNAGDLAPAGGAASASTDEAADAESGTRNRQLQLISFSMAWAN
Formulation:	Liquid. Purified antibody supplied in 1x PBS buffer with 0.09% (w/v) sodium azide and 2% sucrose. <i>Note that this product is shipped as lyophilized powder to China customers.</i>
Purification:	Affinity Purified
Conjugation:	Unconjugated
Storage:	Store at -20°C as received.
Stability:	Stable for 12 months from date of receipt.
Predicted Protein Size:	61 kDa
Gene Name:	CDKN2A interacting protein
Database Link:	<a href="#">NP_060102</a> <a href="#">Entrez Gene 55602 Human</a> <a href="#">Q9NXV6</a>
Background:	The function of this protein remains unknown.
Synonyms:	CARF
Note:	Immunogen Sequence Homology: Human: 100%; Rabbit: 100%; Pig: 93%; Rat: 93%; Bovine: 93%; Dog: 83%; Mouse: 79%



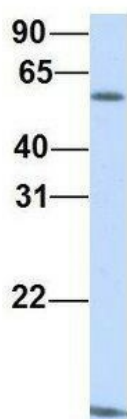
[View online »](#)

## Product images:



WB Suggested Anti-CDKN2AIP Antibody Titration:  
0.2-1 ug/ml; ELISA Titer: 1: 62500; Positive  
Control: OVCAR-3 cell lysate

## CDKN2AIP



Rabbit Anti-CDKN2AIP  
Sample Type: Human Adult  
Placenta  
Antibody Concentration: 1ug/mL

Host: Rabbit; Target Name: CDKN2AIP; Sample  
Tissue: Human Adult Placenta; Antibody Dilution:  
1.0 ug/ml