

## Product datasheet for **TA343855**

### FOXRED1 Rabbit Polyclonal Antibody

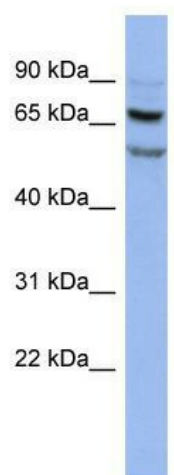
#### Product data:

Product Type:	Primary Antibodies
Applications:	WB
Recommended Dilution:	WB
Reactivity:	Human
Host:	Rabbit
Isotype:	IgG
Clonality:	Polyclonal
Immunogen:	The immunogen for anti-FOXRED1 antibody: synthetic peptide directed towards the N terminal of human FOXRED1. Synthetic peptide located within the following region: SEIKKKIKSILPGRSCDLLQDTSHLPPEHSDVWVGGGVLGLSVAYWLKK
Formulation:	Liquid. Purified antibody supplied in 1x PBS buffer with 0.09% (w/v) sodium azide and 2% sucrose.
Purification:	Affinity Purified
Conjugation:	Unconjugated
Storage:	Store at -20°C as received.
Stability:	Stable for 12 months from date of receipt.
Predicted Protein Size:	54 kDa
Gene Name:	FAD-dependent oxidoreductase domain containing 1
Database Link:	<a href="#">NP_060017</a> <a href="#">Entrez Gene 55572 Human</a> <a href="#">Q96CU9</a>
Background:	The function of this protein remains unknown.
Synonyms:	FP634; H17
Note:	Immunogen Sequence Homology: Horse: 100%; Human: 100%; Dog: 92%; Pig: 92%; Rat: 92%; Bovine: 92%; Rabbit: 92%; Guinea pig: 92%; Mouse: 85%



[View online »](#)

## Product images:



WB Suggested Anti-FOXRED1 Antibody Titration:  
0.2-1 ug/ml; ELISA Titer: 1: 1562500; Positive  
Control: HT1080 cell lysate