

## Product datasheet for **TA343854**

### **RBM38 Rabbit Polyclonal Antibody**

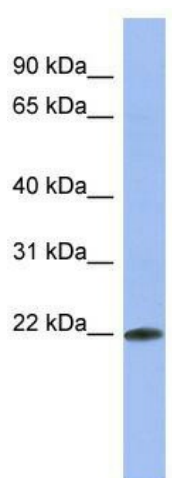
#### **Product data:**

Product Type:	Primary Antibodies
Applications:	WB
Recommended Dilution:	WB
Reactivity:	Human
Host:	Rabbit
Isotype:	IgG
Clonality:	Polyclonal
Immunogen:	The immunogen for anti-RBM38 antibody: synthetic peptide directed towards the middle region of human RBM38. Synthetic peptide located within the following region: QYPYAASPATAASFVGYSPAAVPQALSAAAAPAGTTFVQYQAPQLQPDRM
Formulation:	Liquid. Purified antibody supplied in 1x PBS buffer with 0.09% (w/v) sodium azide and 2% sucrose. <i>Note that this product is shipped as lyophilized powder to China customers.</i>
Purification:	Affinity Purified
Conjugation:	Unconjugated
Storage:	Store at -20°C as received.
Stability:	Stable for 12 months from date of receipt.
Predicted Protein Size:	25 kDa
Gene Name:	RNA binding motif protein 38
Database Link:	<a href="#">NP_059965</a> <a href="#">Entrez Gene 55544 Human</a> <a href="#">Q9H0Z9</a>
Background:	RBM38 is a probable RNA-binding protein.
Synonyms:	dj800J21.2; HSRNASEB; RNPC1; SEB4B; SEB4D
Note:	Immunogen Sequence Homology: Rat: 100%; Human: 100%; Mouse: 100%; Pig: 93%; Guinea pig: 93%; Dog: 86%; Bovine: 86%



[View online »](#)

## Product images:



WB Suggested Anti-RBM38 Antibody Titration:  
0.2-1 ug/ml; ELISA Titer: 1: 62500; Positive  
Control: HT1080 cell lysate