

Product datasheet for **TA343853**

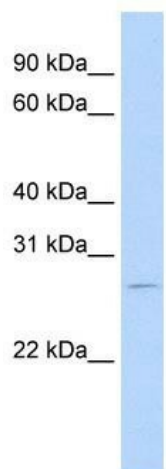
RBM38 Rabbit Polyclonal Antibody

Product data:

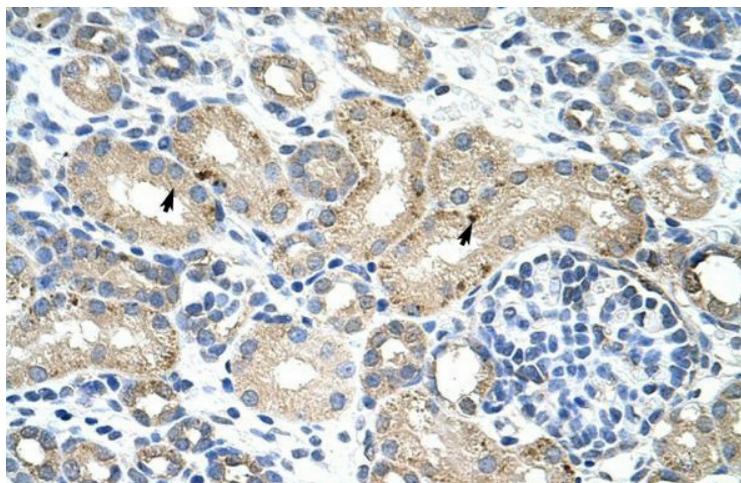
Product Type:	Primary Antibodies
Applications:	IHC, WB
Recommended Dilution:	WB, IHC
Reactivity:	Human
Host:	Rabbit
Isotype:	IgG
Clonality:	Polyclonal
Immunogen:	The immunogen for anti-RBM38 antibody: synthetic peptide directed towards the N terminal of human RBM38. Synthetic peptide located within the following region: LPYHTTDASLRKYFEGFGDIEEAVITDRQTGKSRGYGFVTMADRAAAER
Formulation:	Liquid. Purified antibody supplied in 1x PBS buffer with 0.09% (w/v) sodium azide and 2% sucrose. <i>Note that this product is shipped as lyophilized powder to China customers.</i>
Purification:	Affinity Purified
Conjugation:	Unconjugated
Storage:	Store at -20°C as received.
Stability:	Stable for 12 months from date of receipt.
Predicted Protein Size:	26 kDa
Gene Name:	RNA binding motif protein 38
Database Link:	NP_059965 Entrez Gene 55544 Human Q9H0Z9
Background:	RBM38 is a probable RNA-binding protein.
Synonyms:	dj800J21.2; HSRNASEB; RNPC1; SEB4B; SEB4D
Note:	Immunogen Sequence Homology: Dog: 100%; Pig: 100%; Human: 100%; Mouse: 100%; Bovine: 100%; Zebrafish: 100%; Guinea pig: 100%; Rat: 79%



[View online »](#)

Product images:

WB Suggested Anti-RBM38 Antibody Titration: 0.2-1 ug/ml; Positive Control: RPMI 8226 cell lysate; RBM38 is supported by BioGPS gene expression data to be expressed in RPMI 8226



Rabbit Anti-RBM38 Antibody; Paraffin Embedded Tissue: Human Kidney; Cellular Data: Epithelial cells of renal tubule; Antibody Concentration: 4.0-8.0 ug/ml; Magnification: 400X