

Product datasheet for **TA343849**

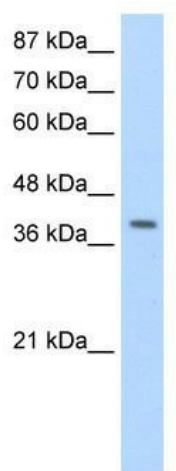
LARP7 Rabbit Polyclonal Antibody

Product data:

Product Type:	Primary Antibodies
Applications:	WB
Recommended Dilution:	WB
Reactivity:	Human
Host:	Rabbit
Isotype:	IgG
Clonality:	Polyclonal
Immunogen:	The immunogen for anti-LARP7 antibody: synthetic peptide directed towards the C terminal of human LARP7. Synthetic peptide located within the following region: HCWKLEILSGDHEQRYWQKILVDRQAKLNQPREKRGTEKLITKAEKIRL
Formulation:	Liquid. Purified antibody supplied in 1x PBS buffer with 0.09% (w/v) sodium azide and 2% sucrose.
Purification:	Protein A purified
Conjugation:	Unconjugated
Storage:	Store at -20°C as received.
Stability:	Stable for 12 months from date of receipt.
Predicted Protein Size:	39 kDa
Gene Name:	La ribonucleoprotein domain family member 7
Database Link:	NP_001253968 Entrez Gene 51574 Human Q4G0J3
Background:	The function remains unknown.
Synonyms:	ALAZS; HDCMA18P; PIP7S
Note:	Immunogen Sequence Homology: Dog: 100%; Pig: 100%; Rat: 100%; Horse: 100%; Human: 100%; Mouse: 100%; Bovine: 100%; Rabbit: 100%; Guinea pig: 100%; Zebrafish: 93%



[View online »](#)

Product images:

WB Suggested Anti-LARP7 Antibody Titration:
1.25 ug/ml; Positive Control: Jurkat cell
lysate LARP7 is supported by BioGPS gene
expression data to be expressed in Jurkat