

## Product datasheet for **TA343848**

### LARP7 Rabbit Polyclonal Antibody

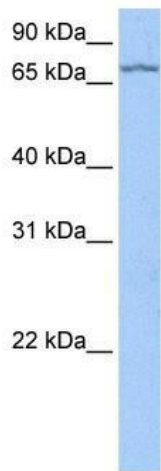
#### Product data:

Product Type:	Primary Antibodies
Applications:	WB
Recommended Dilution:	WB
Reactivity:	Human
Host:	Rabbit
Isotype:	IgG
Clonality:	Polyclonal
Immunogen:	The immunogen for anti-LARP7 antibody: synthetic peptide directed towards the C terminal of human LARP7. Synthetic peptide located within the following region: WQKILVDRQAKLNQPREKKRGTEKLITKAEKIRLAKTQQASKHIRFSEYD
Formulation:	Liquid. Purified antibody supplied in 1x PBS buffer with 0.09% (w/v) sodium azide and 2% sucrose.
Purification:	Affinity Purified
Conjugation:	Unconjugated
Storage:	Store at -20°C as received.
Stability:	Stable for 12 months from date of receipt.
Predicted Protein Size:	67 kDa
Gene Name:	La ribonucleoprotein domain family member 7
Database Link:	<a href="#">NP_056269</a> <a href="#">Entrez Gene 51574 Human</a> <a href="#">Q4G0J3</a>
Background:	The function remains unknown.
Synonyms:	ALAZS; HDCMA18P; PIP7S
Note:	Immunogen Sequence Homology: Dog: 100%; Pig: 100%; Rat: 100%; Horse: 100%; Human: 100%; Mouse: 93%; Bovine: 93%; Rabbit: 93%; Guinea pig: 93%

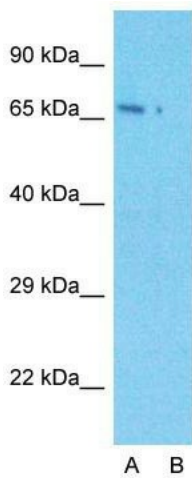


[View online »](#)

Product images:



WB Suggested Anti-LARP7 Antibody Titration: 0.2-1 ug/ml; Positive Control: HeLa cell lysate



**Anti-LARP7 Western Blot & Peptide Block Validation**

Lysate: HeLa cell

Lane A: Primary Antibody  
Lane B: Primary Antibody + Blocking Peptide

Primary Antibody Concentration: 1.0µg/ml  
Peptide Concentration: 5.0µg/ml  
Lysate Quantity: 25µg/lane  
Gel Concentration: 12%

Host: Rabbit; Target Name: LARP7; Sample Tissue: HeLa Whole cell; Lane A: Primary Antibody; Lane B: Primary Antibody + Blocking Peptide; Primary Antibody Concentration: 1 ug/ml; Peptide Concentration: 5 ug/ml; Lysate Quantity: 25 ug/lane; Gel Concentratio